

Superintendent's Report Orange Public Schools “Good to Great”

Gerald Fitzhugh, II, Ed.D.
Superintendent of Schools
“The Teaching Superintendent”

April 10, 2024

Focus Core Area Numbers 1- 4
District Goal Number 1-4 and All Sub Sections





Scholarships Update

Gerald Fitzhugh, II, Ed.D.
Superintendent of Schools
“The Teaching Superintendent”

April 10, 2024

Focus Core Area Numbers 1 & 2
District Goal Number 1&4 and All Sub Sections



Scholarship Update as of April 8, 2024

- This past week, I requested scholarship totals for the Orange High School and STEM Innovation Academy of the Oranges. As shared previously, I will report out on scholarships, so the community and Board of Education are very much aware of information in real time.
- April 8, 2024 Total: \$17,493,529
- OHS: \$11,162,589
- STEM: \$6,330,940
- OHS: \$7,753,589
- STEM: \$4,383,280
- Total as of February 9th: \$12,136,869
- January 5th's Numbers are below.....
- OHS - \$4,317,500
- STEM - \$4,195,280
- Total: \$8,512,780.00

Congratulations thus far to the Class of 2024 as well as our guidance, instructional, and administrative staff members for working so diligently with our scholars.

Last year, we amassed over 35 million dollars in scholarships district wide. We are well on our way....More to come!

Celebration of Students

Student of the Month Announcement

Gerald Fitzhugh, II, Ed.D.
Superintendent of Schools
“The Teaching Superintendent”
April 10, 2024
Focus Core Area Numbers 1 & 2
District Goal Number 1&4 and All Sub Sections



Students of the Month
March 2024
Congratulations to our STAR Students!

Name of School	Student of the Month
Central Elementary School	Sherlyn Morocho Paucar
Cleveland Street School	Malakai Cannon
Forest Street Community School	Mofolafoluwa Olugdade
Heywood Avenue School	Jorge Lema
Lincoln Avenue School	Luz Mestiza Lorenzo
Oakwood Avenue Community School	Camoora-Lee Jones

Name of School	Student of the Month
Orange High School	Allan Mesirin
Orange Preparatory Academy	Malachi Alleyne
Park Avenue School	Orwhens Sanon
Rosa Parks Community School	William Tinuar
STEM Innovation Academy of the Oranges	Michele Tong Navarro
The Twilight Program	Paul Miller

Attendance Presentation from the Month of March 2024



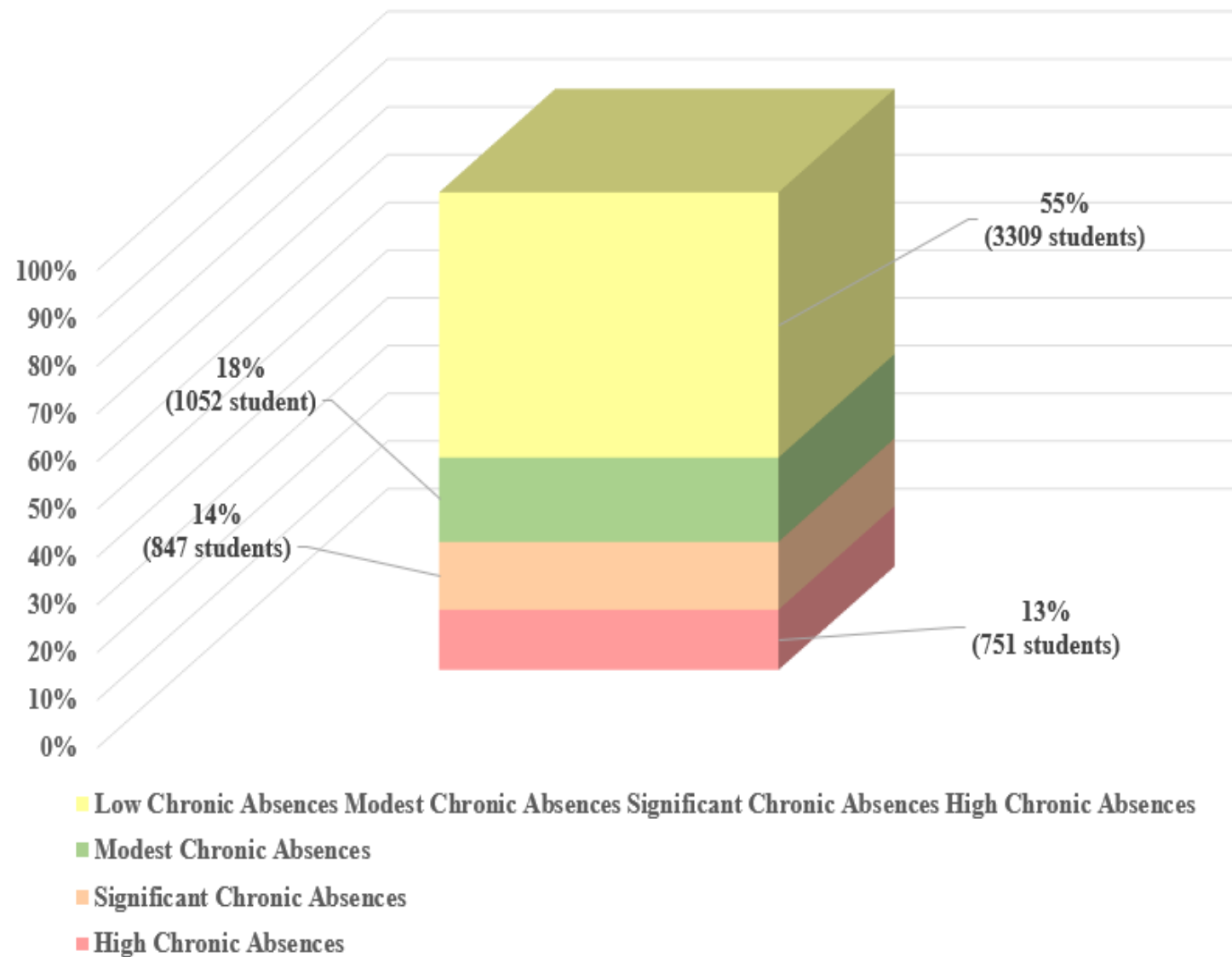
Gerald Fitzhugh, II, Ed.D.
Superintendent of Schools
“The Teaching Superintendent”
April 10, 2024

Chronically
Absence
Categories
are Identified
As:

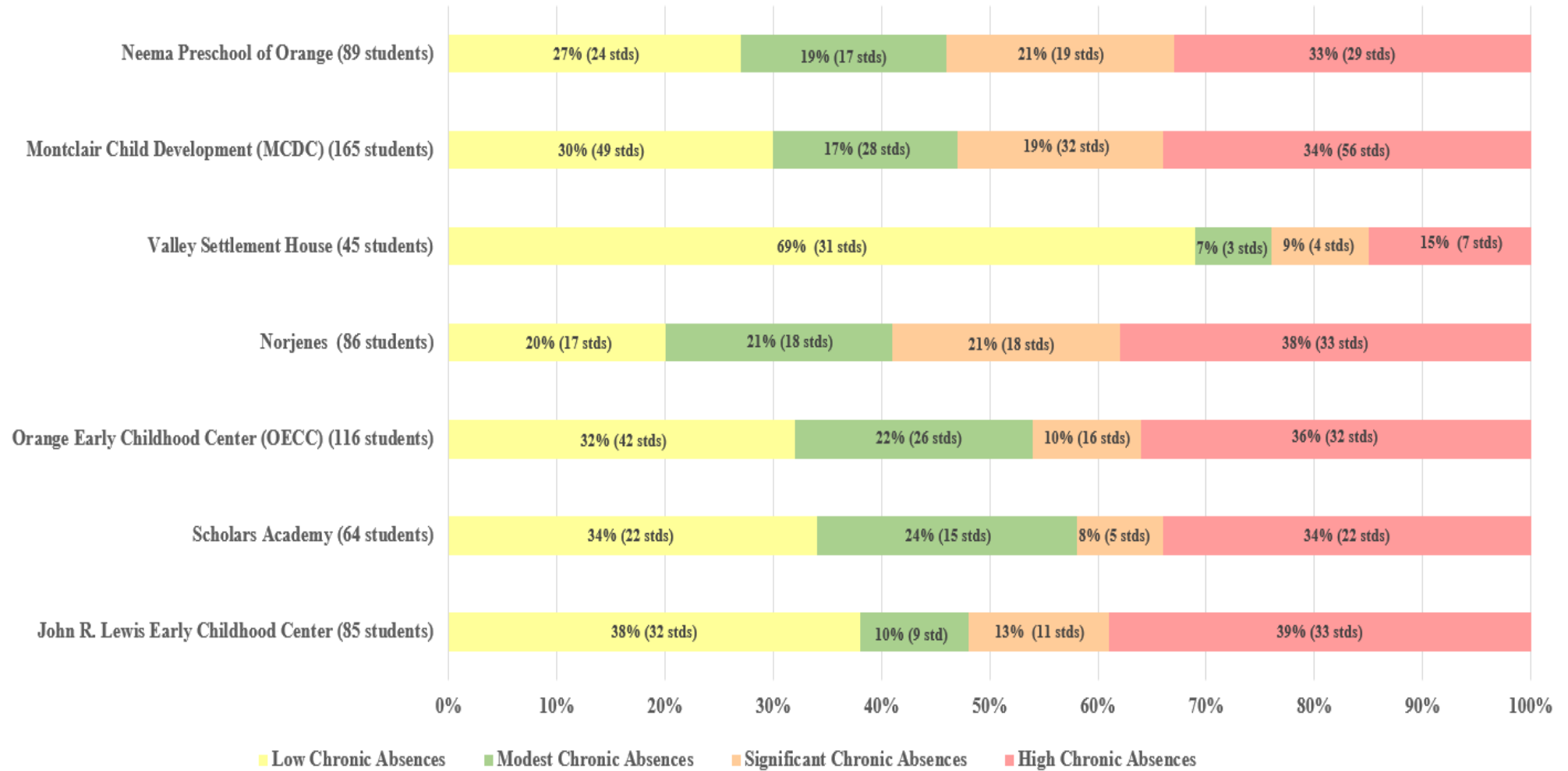
Absences Category	Cumulative Days Absent for the Month of March 2024
Low Chronic Absences	0 to 5.99 days
Modest Chronic Absences	6 to 8.99 days
Significant Chronic Absences	9 to 12.99 days
High Chronic Absences	13 days or more

*Students are chronically absent when excused or unexcused absences are equal to or greater than 10% of the total number of days enrolled in the school year.

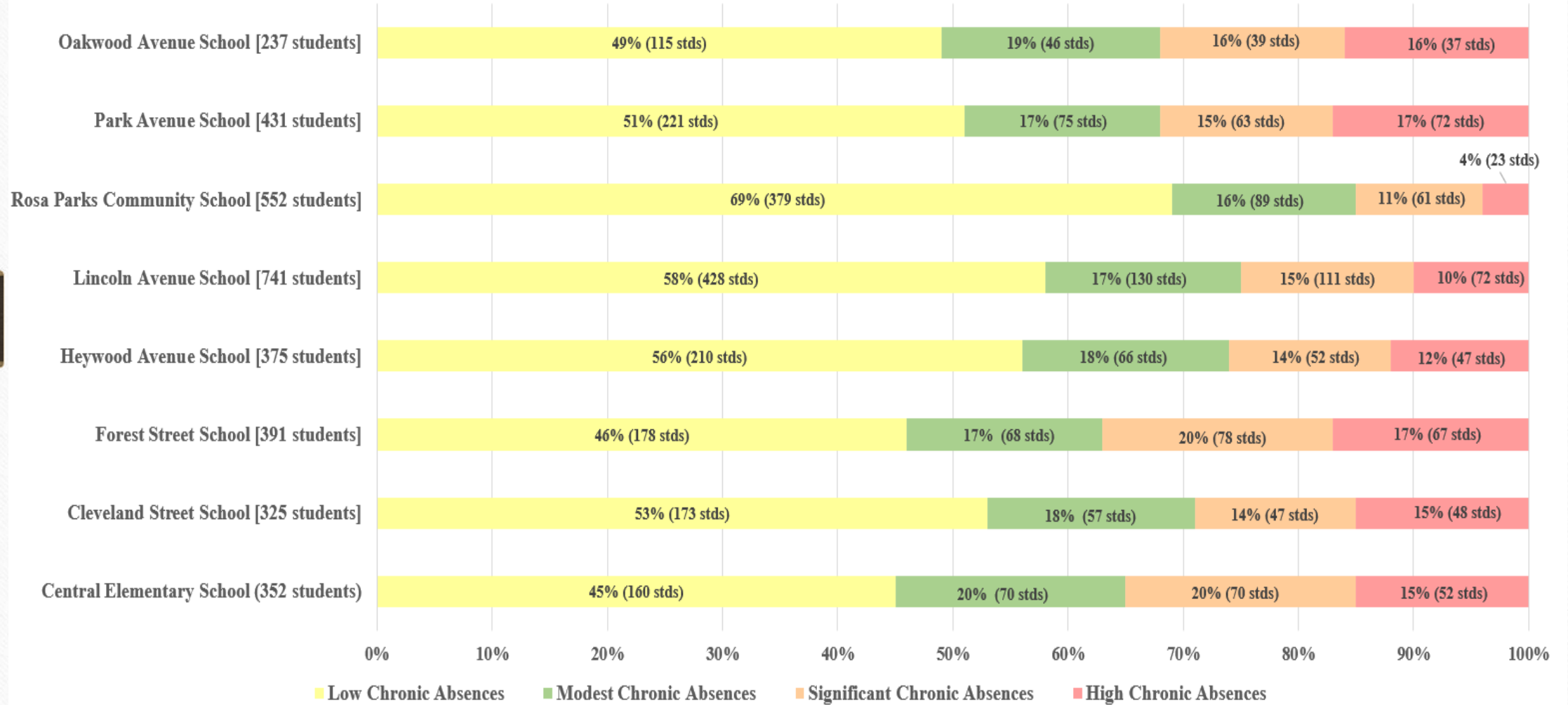
Cumulative Absences for the Month of March by Category



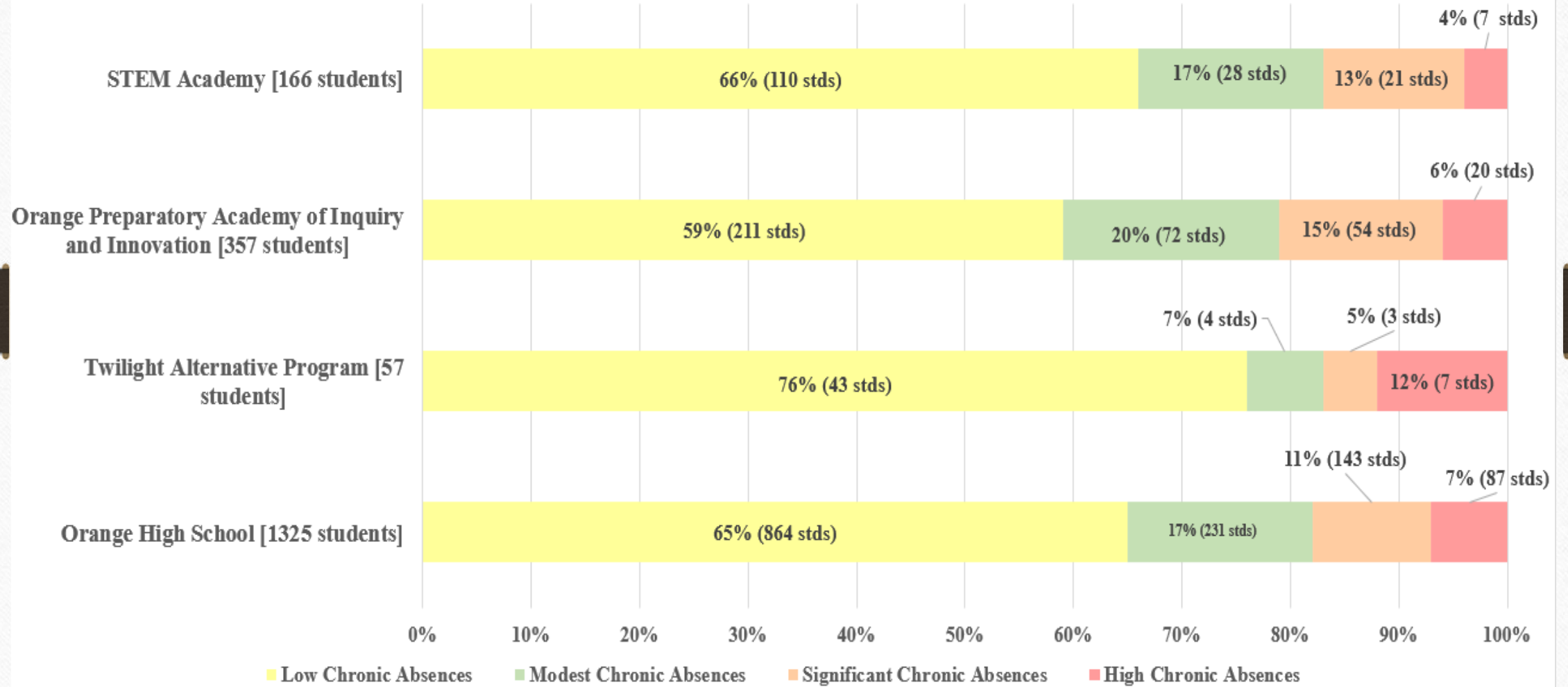
Cumulative Absences by School for the Month of March Early Childhood Program



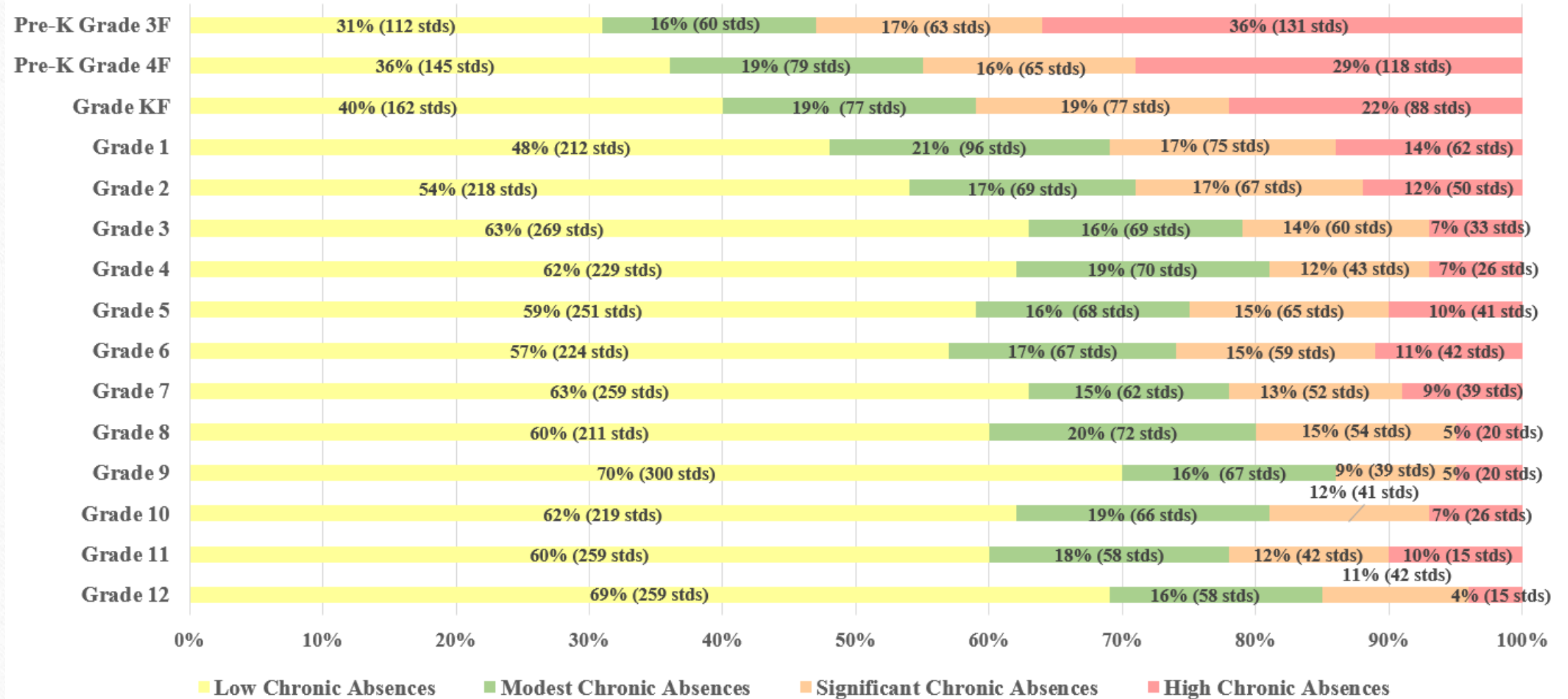
Cumulative Absences by School for the Month of March Kindergarten through Grade 7



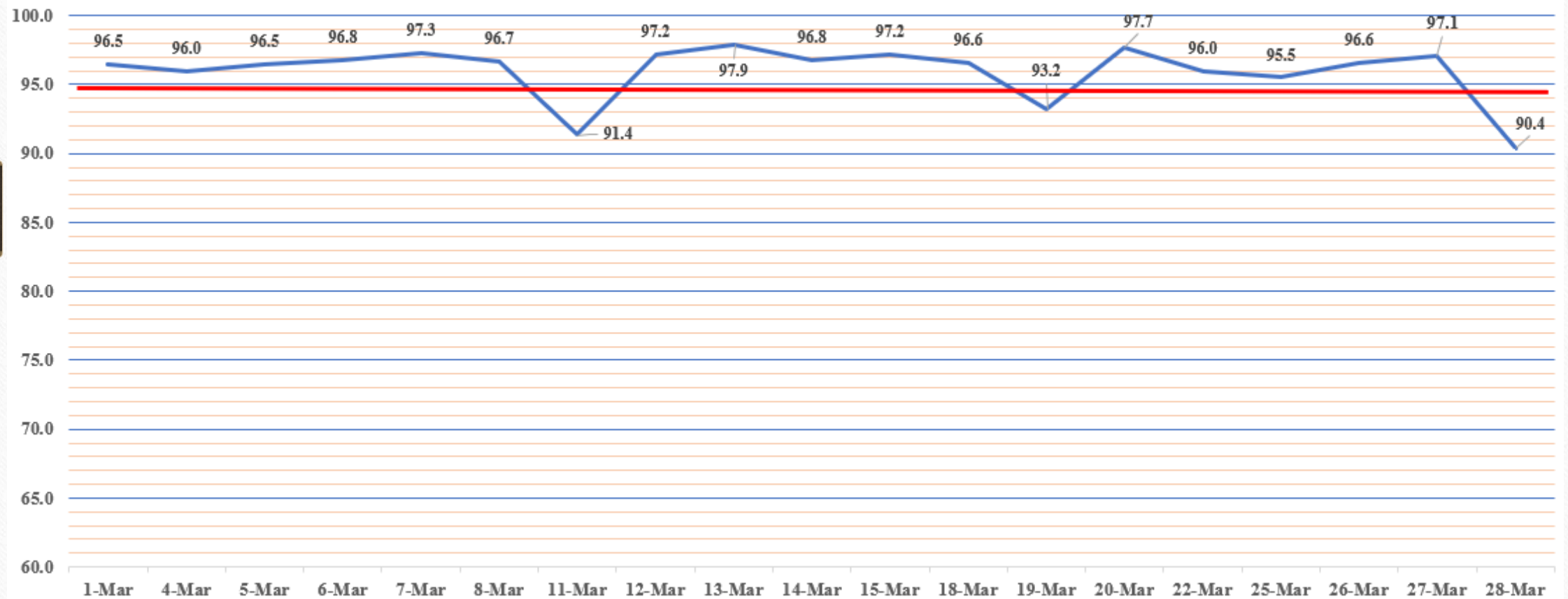
Cumulative Absences by School for the Month of March Grades 8 through 12



Cumulative Absences for the Month of March by Grade Level



March 2024
Average Daily Attendance Percentages
***State Average is 95%**
District Average Daily Attendance was 96%



Orange Public Schools Office of Guidance's Look at SEL/Wellness

Mrs. Felecia Ware, M. ED
Supervisor of Guidance
April 10, 2024



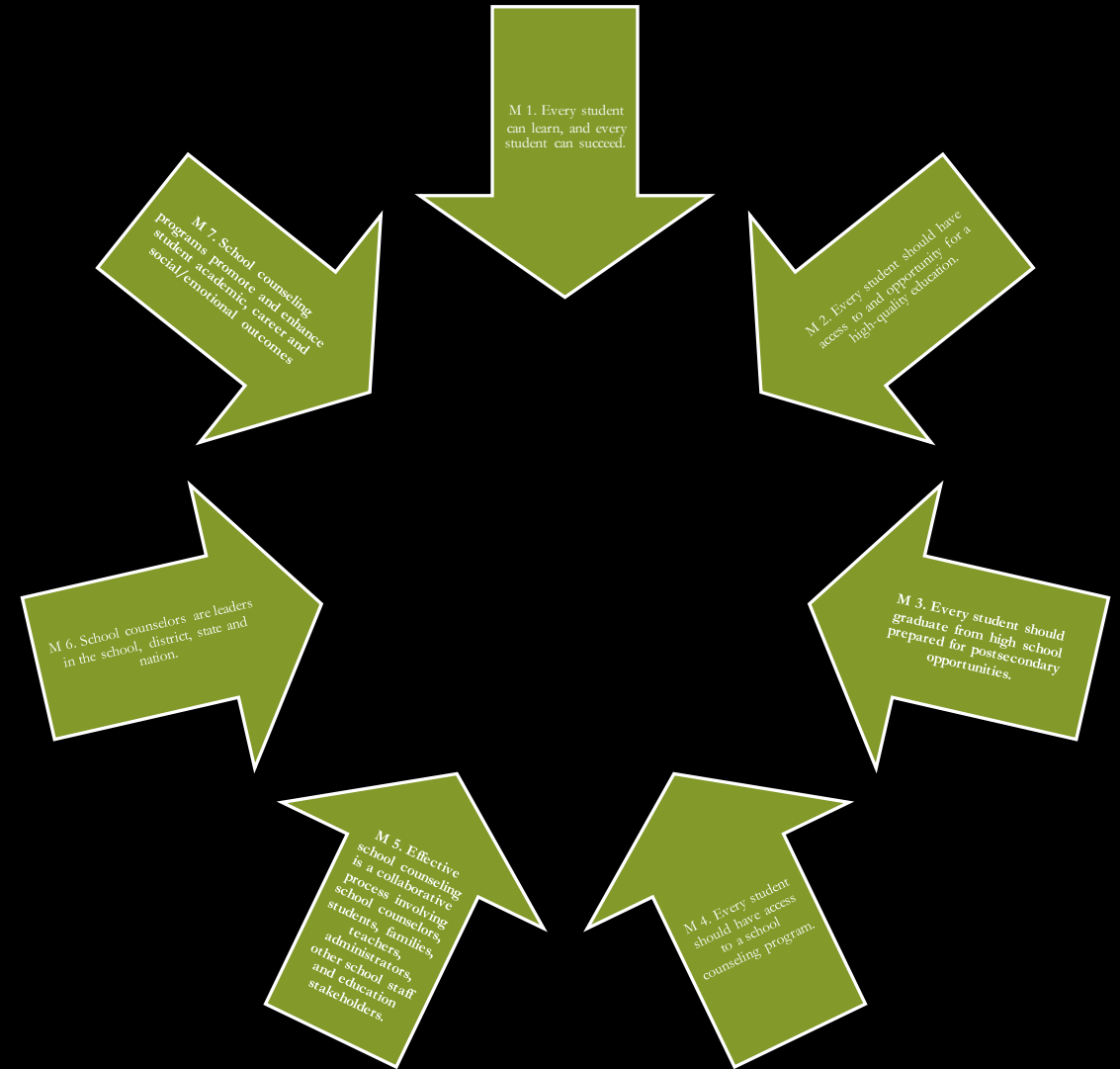
Points to Discuss...

- College & Career Exploration
- Social Emotional Learning Initiatives
- Second Step SEL Platform
- Q & A



ASCA School Counselor Professional Standards & Competencies

MINDSETS
School counselors believe:



Delivery of Services

3 Tier Support System in a
comprehensive counseling program.



The Benefits of SEL

- SEL leads to improved academic achievement
 - When students have supportive relationships and opportunities to develop and practice social, emotional, and cognitive skills across many different contexts, academic learning accelerate.
 - Students participating in SEL at school have higher levels of “school functioning,” as reflected by their grades, test scores, attendance, and homework completion.



SELF-AWARENESS

The ability to accurately recognize one's own emotions, thoughts, and values and how they influence behavior. The ability to accurately assess one's strengths and limitations, with a well-grounded sense of confidence, optimism, and a "growth mindset."

- IDENTIFYING EMOTIONS
- ACCURATE SELF-PERCEPTION
- RECOGNIZING STRENGTHS
- SELF-CONFIDENCE
- SELF-EFFICACY

SELF-MANAGEMENT

The ability to successfully regulate one's emotions, thoughts, and behaviors in different situations — effectively managing stress, controlling impulses, and motivating oneself. The ability to set and work toward personal and academic goals.

- IMPULSE CONTROL
- STRESS MANAGEMENT
- SELF-DISCIPLINE
- SELF-MOTIVATION
- GOAL SETTING
- ORGANIZATIONAL SKILLS

SOCIAL AWARENESS

The ability to take the perspective of and empathize with others, including those from diverse backgrounds and cultures. The ability to understand social and ethical norms for behavior and to recognize family, school, and community resources and supports.

- PERSPECTIVE-TAKING
- EMPATHY
- APPRECIATING DIVERSITY
- RESPECT FOR OTHERS

RELATIONSHIP SKILLS

The ability to establish and maintain healthy and rewarding relationships with diverse individuals and groups. The ability to communicate clearly, listen well, cooperate with others, resist inappropriate social pressure, negotiate conflict constructively, and seek and offer help when needed.

- COMMUNICATION
- SOCIAL ENGAGEMENT
- RELATIONSHIP BUILDING
- TEAMWORK

RESPONSIBLE DECISION-MAKING

The ability to make constructive choices about personal behavior and social interactions based on ethical standards, safety concerns, and social norms. The realistic evaluation of consequences of various actions, and a consideration of the well-being of oneself and others.

- IDENTIFYING PROBLEMS
- ANALYZING SITUATIONS
- SOLVING PROBLEMS
- EVALUATING
- REFLECTING
- ETHICAL RESPONSIBILITY



Social & Emotional Learning (SEL) Competencies

FIXED MINDSET



GROWTH MINDSET



FIXED

I'll never be as smart
as that person.

I can't do it.

This is too hard.

I'm not good at this.

I made a mistake.

I give up.



GROWTH

Everyone is talented
in many ways.

I'm still learning.
I'll keep trying.

With more practice
it will be easier.

This may take
some time and effort.

Mistakes
help me learn.

I can try a different
strategy.



Social & Emotional Learning (SEL) Programs in Orange Public Schools

- **NJ4S-Essex/Orange Partnership**- DCF's Family Connections provides 3 tiered mental health/well being services to all schools in district. Individual, small group and assembly. Provide an array of wellness services to support students and their parents or caregivers.

- <https://www.familyconnectionsnj.org/nj4s/what-we-do/>

- **Second Step Program** builds social-emotional skills in students through interactive lessons lead by school counselors, social workers and teachers.

- **Mental Health First Aid Program** trains school staff and students the skills to respond to the signs of mental illness and substance use.

NJ4S Small Group Topics

- All groups can be delivered by staff who are fluent in English, Spanish, and Creole.
- ANTI-BULLYING/VIOLENCE PREVENTION GROUPS
- IMPACT OF TRAUMA ON STUDENTS
- MENTAL HEALTH/WELLBEING/SUICIDE PREVENTION
- POSITIVE PARENTING GROUPS
- SEXUAL HEALTH/PREGNANCY PREVENTION
- SOCIAL AND EMOTIONAL WELLNESS/HEALTHY RELATIONSHIPS
- SUBSTANCE USE PREVENTION

Career Exploration Opportunities

- ★ Classroom Guidance Lessons & Small Groups
- ★ Cooperman Barnabas Job Shadowing
- ★ Orange Public Library Volunteer Program
- ★ Trade School Information Sessions
- ★ Leadership Summits & Youth Conferences
- ★ Community Partners
- ★ Career Day
- ★ CTE Awareness and Programs
- ★ Guest Speakers
- ★ Online Platforms for Interest/Skill Inventories & Resume Writing
 - Naviance
 - College Board
 - Major Clarity
- ★ Mentorship Opportunities
- ★ Exploratory Programs
 - NJIT Education Day (7th Grade)
 - Rutgers Business School (11th Grade)
 - Rutgers Newark TRIO
- ★ School-Wide Career Day
- ★ School-Wide College Week

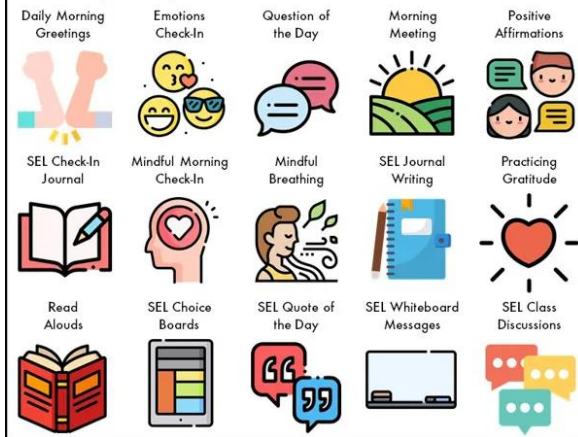


Professional Development Opportunities

- Restorative Practices Training on 8/25
- Supporting the Education of Unaccompanied Students Experiencing Homelessness webinar on 12/14
- Teen Mental Health First Aid Implementation Training on 12/15
- Creating Trauma-Informed and Healing-Centered School and Classroom Environments on 2/1
- Guidance: Using Mental Health Screenings in Schools on 2/23
- NJ4S Racial Trauma Webinar on 2/29
- NJSBF Trauma Sensitive Schools (Virtual) on 3/12
- NJ4S Statewide Student Support Services Network Program on 3/21
- NJ School Counselor Association Spring Conference on 4/19
 - Building a Collaborative School Counseling Team
 - Building Bridges for ELLs- How Counselors can Support
- Essex County Schools of Technology School Counseling Administrator Luncheon
 - Managing mental health support and programs
- NJ State Bar Association Trauma Sensitive Schools on 5/1

SEL Practices to Start the Day

www.thepathway2success.com



#SELday



Social Emotional Learning (SEL) Initiatives

Second Step SEL Platform

Empowered with Skills for Life

Second Step® programs help students build social-emotional skills—like nurturing positive relationships, managing emotions, and setting goals—so they can thrive in school and in life.



April is Autism Awareness Month

- April 2nd is the 16th annual **World Autism Awareness Day**, as designated by the United Nations. This year's United Nations theme is "Inclusive Quality Education for All," to recognize the fact that school closures due to COVID hit students with autism especially hard.
- The UN, which officially declared April 2nd World Autism Awareness Day in 2008
- And the entire month of April is promoted by many organizations as a month devoted to those affected by **Autism Spectrum Disorder (ASD)**. According to Autism Speaks, it's World Autism Month. The Autism Society of America calls April **Autism Acceptance Month**. Still, the most often seen label is "Autism Awareness Month."

Public Budget Hearing

Each year, the School Business Administrators alongside the Assistant School Business Administrator and Superintendent of Schools will present items for consideration. The budget presentation allows the community to see how funds will be allocated. This meeting will take place in person on Wednesday, April 24, 2024, at 6:00 PM in the board conference room; 451 Lincoln Avenue



National Assistant Principals' Week

National Assistant Principals' Week was April 1-5, 2024! Join me in honoring the enormous contributions of our Orange School District Assistant Principals. Thank you for your continued support of staff, students, and families. Your support has not gone unnoticed. It is important to share that our assistant principals have demonstrated unwavering leadership and continue to be a source of strength and inspiration for us all. Thank you thank you thank you.



National School Librarians' Day

Please join me in celebrating all of our wonderful school librarians within the Orange Public School District! National School Librarian Day was on April 4, 2024. We are thankful for all the knowledge that our librarians possess. Take a moment and say thanks to the awesome librarians that are always on hand to help us each and every day. We salute and thank you always. Dr. Fitzhugh



National Paraprofessional Appreciation Day

Paraprofessional Appreciation Day was celebrated nationally on April 3, 2024. This special day is dedicated to those who work in a classroom under a teacher's direction. A paraprofessional is someone who works under a professional's guidance to help them in their job. In the school sector, paraprofessional educators are also known as teacher's aides, paraeducators, para-pros, and classroom assistants.

These fantastic staff members within the Orange School District deliver targeted support to students who may need extra help and work to maintain the classroom, assist with running it smoothly. Paraprofessionals are the unsung heroes of our education system. Join me in celebrating all of our paraprofessionals within our district, you are certainly appreciated.



Week of the Young Child

Week of the Young Child is currently taking place this week. Established in 1971 by the National Association for the Education of Young Children (NAEYC), the Week of the Young Child takes place the first week of April but due to Spring Break, we celebrated the Week of April 8th district wide.

Week of the Young Child promotes the needs of young children, their families and the early childhood programs that serve them. Thank you all schools that service Pre-Kindergarten and Kindergarten for aligning your thinking to that of the National Association for the Education of Young Children.



Kindergarten Orientation Dates

Save the Dates

School	Date and Time During the Day In-Person
Oakwood	2:00 PM on May 1st
Lincoln	9:00 AM on May 2nd
Forest	9:30 AM May 3rd
Park	1:00 PM on May 6th
Central	10:00 AM on May 7th
Heywood	10:00AM on May 8th
Cleveland (Located at Our Lady of the Valley)	9:30 AM - On May 10th

English Language Arts Midyear Diagnostic SY'2023-24

Office of Humanities



Kindergarten



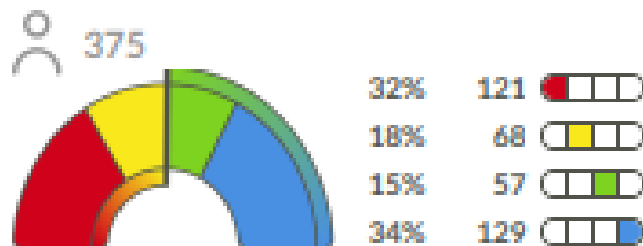
Orange Township Public Schools |
October 18, 2023

2023 - 2024 GRADEK RCS Reading Composite Score

Benchmark Assessments

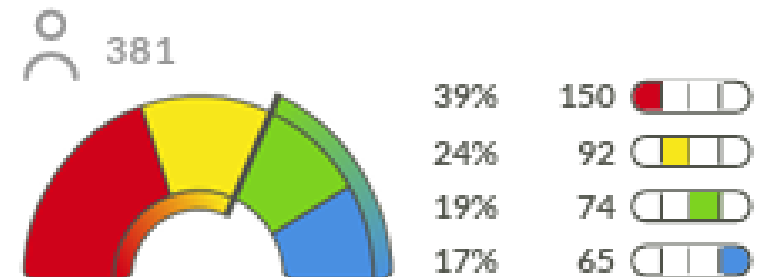
Beginning of Year

Sep 11 - Sep 29, 2023



Middle of Year

Dec 11 - Dec 22, 2023



First Grade



Orange Township Public Schools |
October 18, 2023

2023 - 2024 GRADE 1

RCS

Reading Composite Score

Benchmark Assessments

Beginning of Year

Sep 11 - Sep 29, 2023

411



80%	327	<div><div></div><div></div><div></div><div></div></div>
9%	36	<div><div></div><div></div><div></div><div></div></div>
3%	13	<div><div></div><div></div><div></div><div></div></div>
9%	35	<div><div></div><div></div><div></div><div></div></div>

Middle of Year

Dec 11 - Dec 22, 2023

413



65%	267	<div><div></div><div></div><div></div><div></div></div>
9%	38	<div><div></div><div></div><div></div><div></div></div>
8%	34	<div><div></div><div></div><div></div><div></div></div>
18%	74	<div><div></div><div></div><div></div><div></div></div>

Second Grade



Orange Township Public Schools |
October 18, 2023

2023 - 2024 GRADE 2

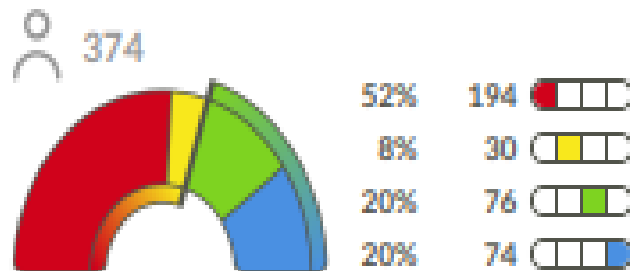
RCS

Reading Composite Score

Benchmark Assessments

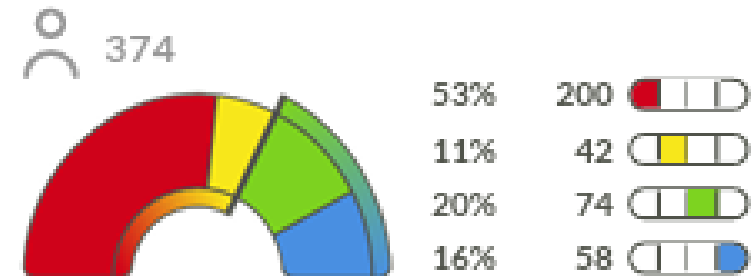
Beginning of Year

Sep 11 - Sep 29, 2023

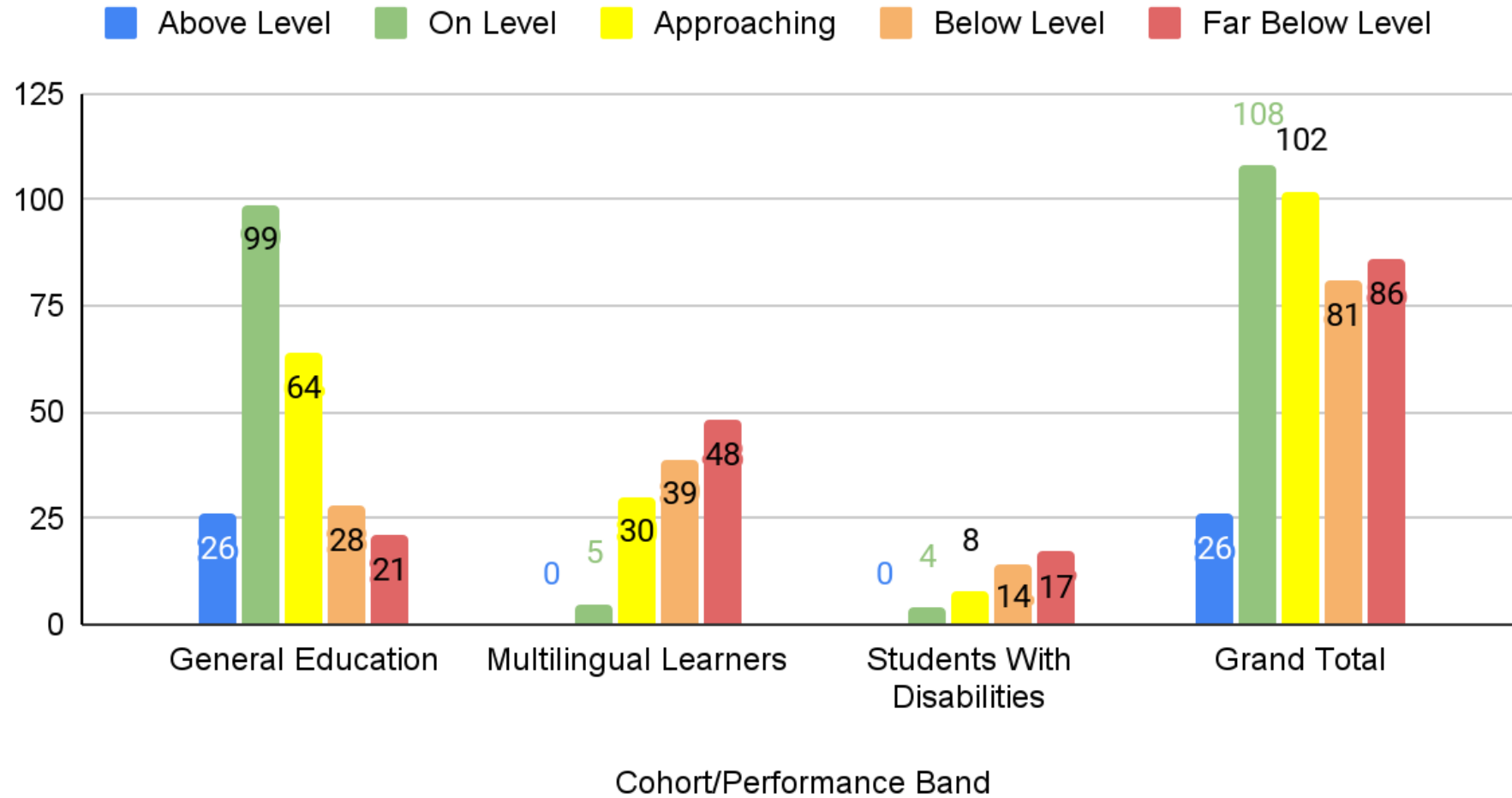


Middle of Year

Dec 11 - Dec 22, 2023



Growth Measure Midyear data - 3rd Grade



3rd
Grade

Growth Measure Fall of SY' 2023-2024

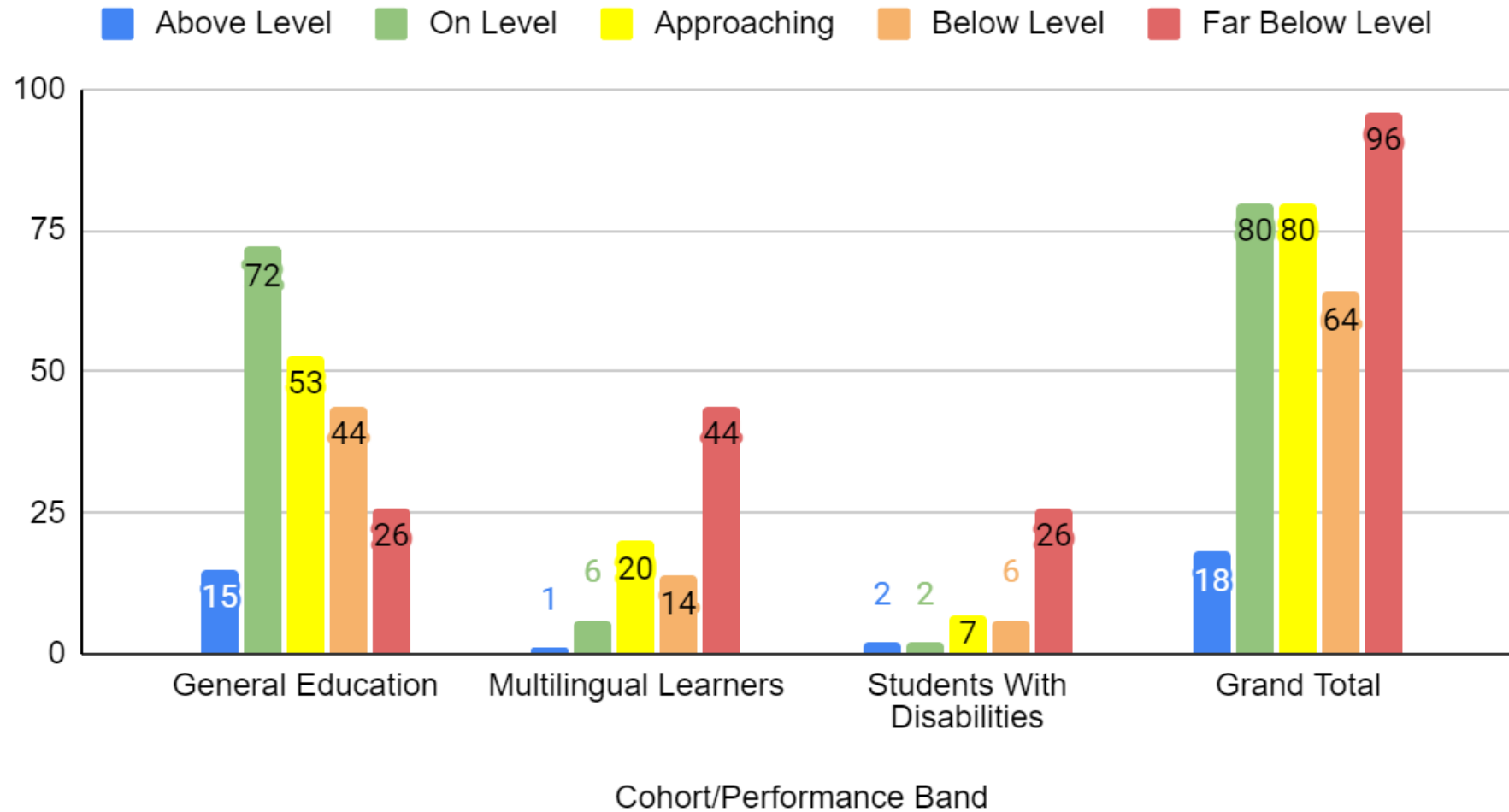
3rd Grade

Cohort/Performance Band	Above Level	On Level	Approaching	Below Level	Far Below Level	Grand Total
General Education	15	71	73	48	34	241
Multilingual Learners		5	13	43	71	132
Students With Disabilities		1	3	9	27	40
Grand Total	15	77	89	96	121	398

Growth Measure Midyear of SY' 2023-2024 3rd Grade

Cohort/Performance Band	Above Level	On Level	Approaching	Below Level	Far Below Level	Grand Total
General Education	26	99	64	28	21	238
Multilingual Learners	0	5	30	39	48	122
Students With Disabilities	0	4	8	14	17	43
Grand Total	26	108	102	81	86	403

Growth Measure Midyear data - 4th Grade

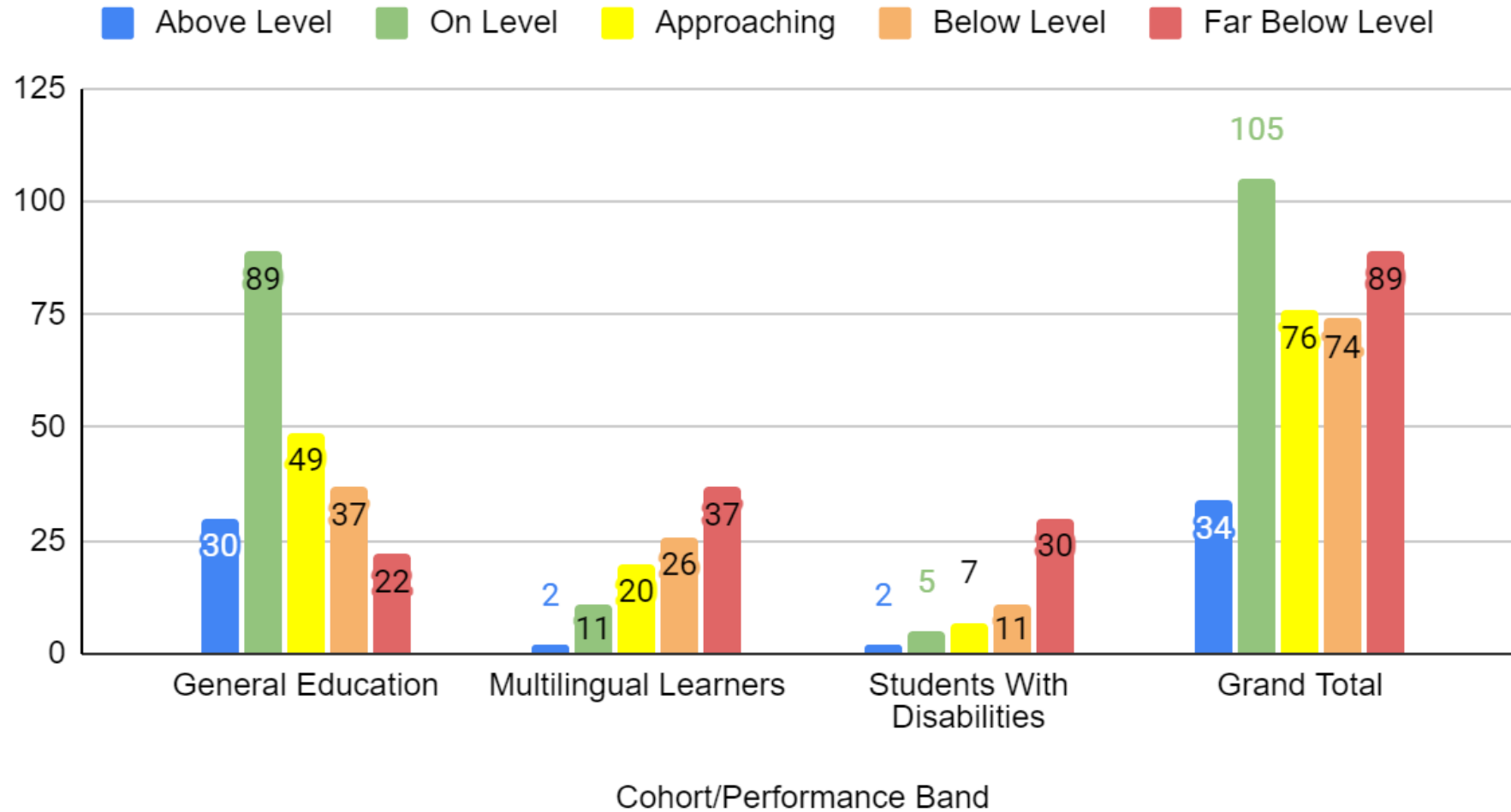


4th Grade

Growth Measure Fall of SY' 2023-2024				4th Grade		
Cohort/Performance Band	Above Level	On Level	Approaching	Below Level	Far Below Level	Grand Total
General Education	7	58	61	39	47	212
Multilingual Learners		3	12	15	67	97
Students With Disabilities		2	5	5	29	41
Grand Total	7	63	78	60	133	341

Growth Measure Midyear of SY' 2023-2024 3rd Grade						
Cohort/Performance Band	Above Level	On Level	Approaching	Below Level	Far Below Level	Grand Total
General Education	15	72	53	44	26	210
Multilingual Learners	1	6	20	14	44	85
Students With Disabilities	2	2	7	6	26	43
Grand Total	18	80	80	64	96	338

Growth Measure Midyear data - 5th Grade



5th
Grade

Growth Measure Fall of SY' 2023-2024

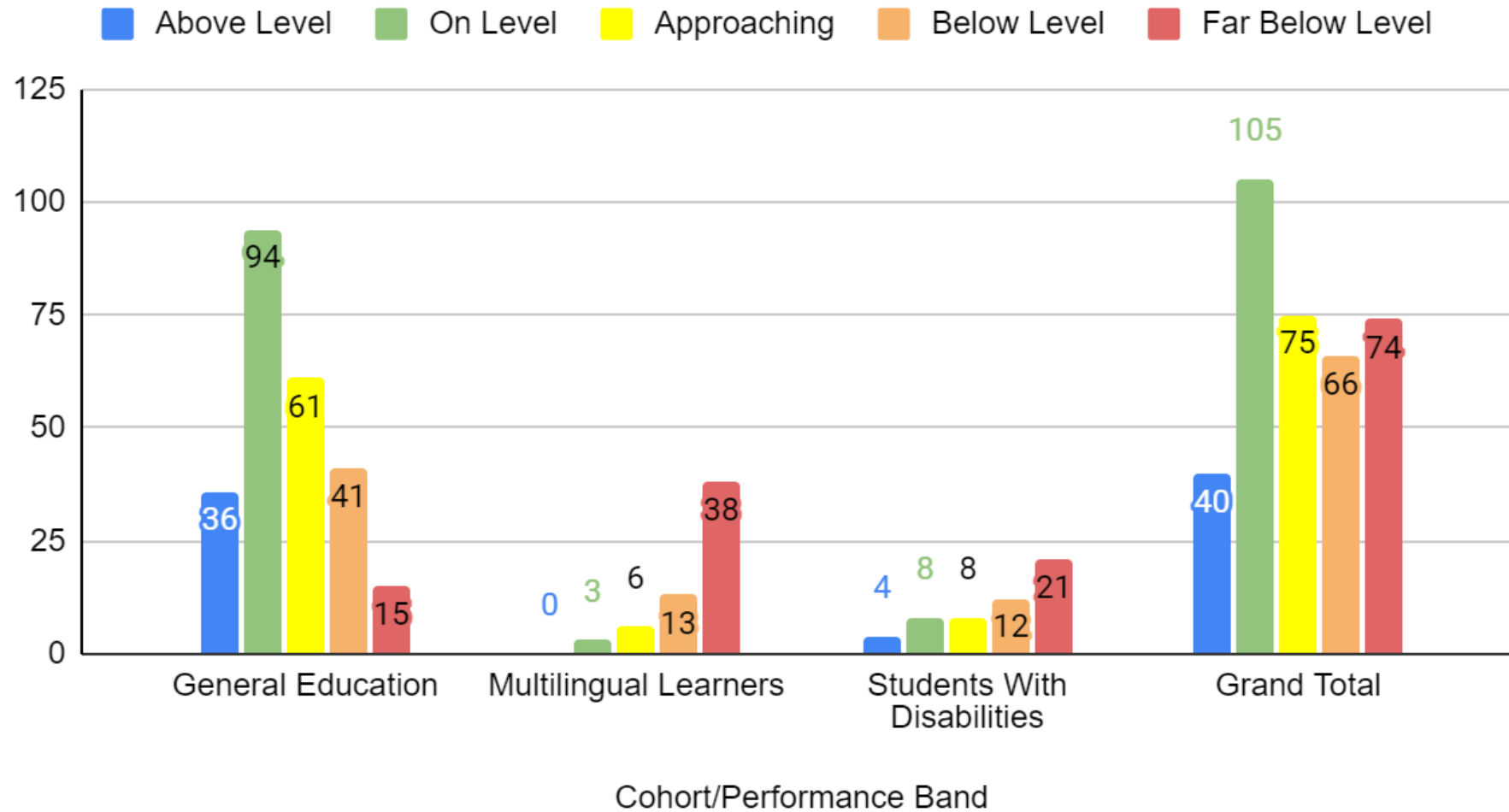
5th Grade

Cohort/Performance Band	Above Level	On Level	Approaching	Below Level	Far Below Level	Grand Total
General Education	20	68	67	43	38	236
Multilingual Learners		3	9	23	59	94
Students With Disabilities		2	2	8	36	48
Grand Total	20	73	78	72	129	372

Growth Measure Midyear of SY' 2023-2024 5th Grade

Cohort/Performance Band	Above Level	On Level	Approaching	Below Level	Far Below Level	Grand Total
General Education	30	89	49	37	22	227
Multilingual Learners	2	11	20	26	37	96
Students With Disabilities	2	5	7	11	30	55
Grand Total	34	105	76	74	89	378

Growth Measure Midyear data - 6th Grade

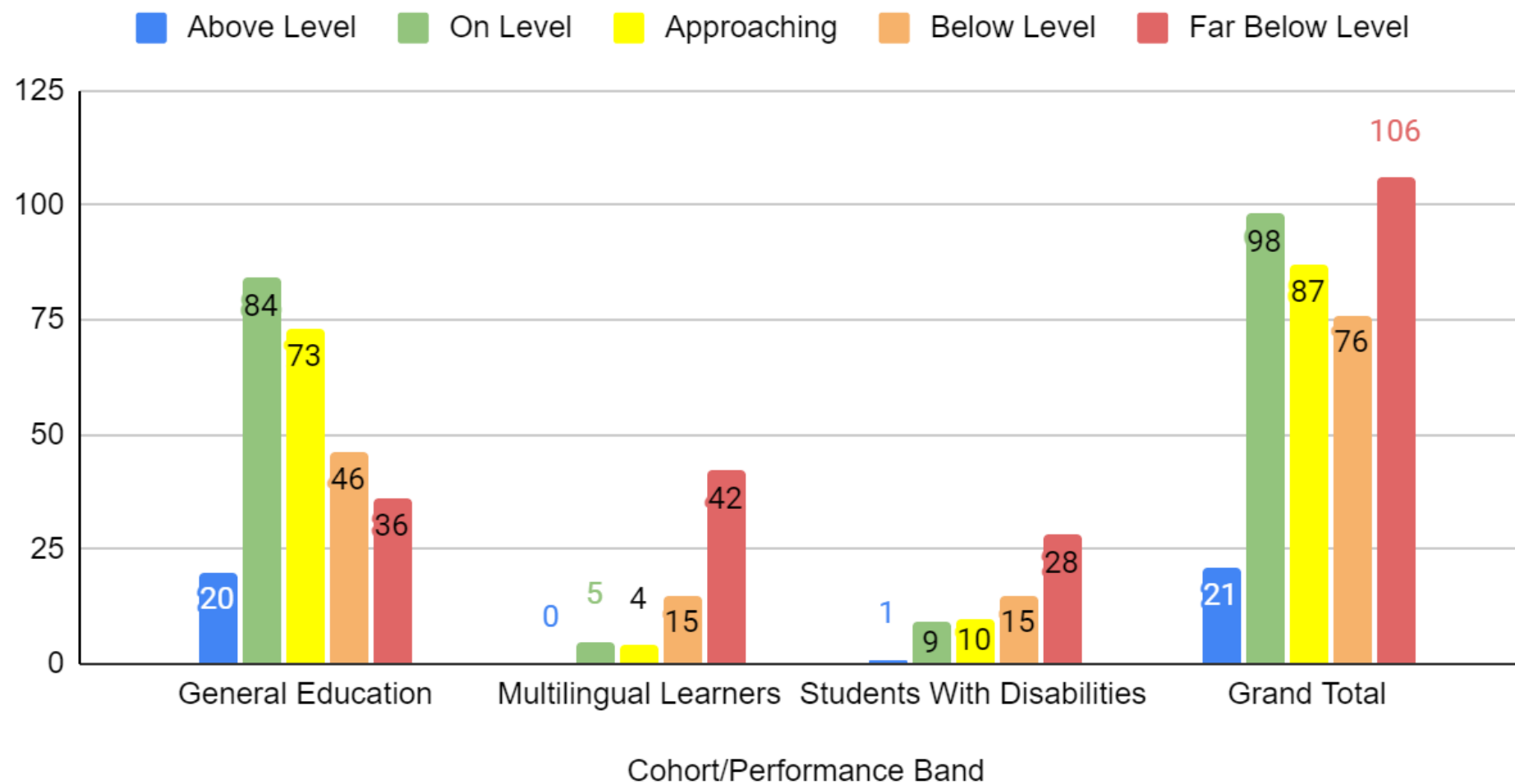


6th Grade

Growth Measure Fall of SY' 2023-2024						6th Grade
Cohort/Performance Band	Above Level	On Level	Approaching	Below Level	Far Below Level	Grand Total
General Education	17	80	56	60	43	256
Multilingual Learners			2	14	45	61
Students With Disabilities			5	13	32	50
Grand Total	17	80	63	84	119	363

Growth Measure Midyear of SY' 2023-2024 6th Grade						
Cohort/Performance Band	Above Level	On Level	Approaching	Below Level	Far Below Level	Grand Total
General Education	36	94	61	41	15	247
Multilingual Learners	0	3	6	13	38	60
Students With Disabilities	4	8	8	12	21	53
Grand Total	40	105	75	66	74	360

Growth Measure Midyear data - 7th Grade

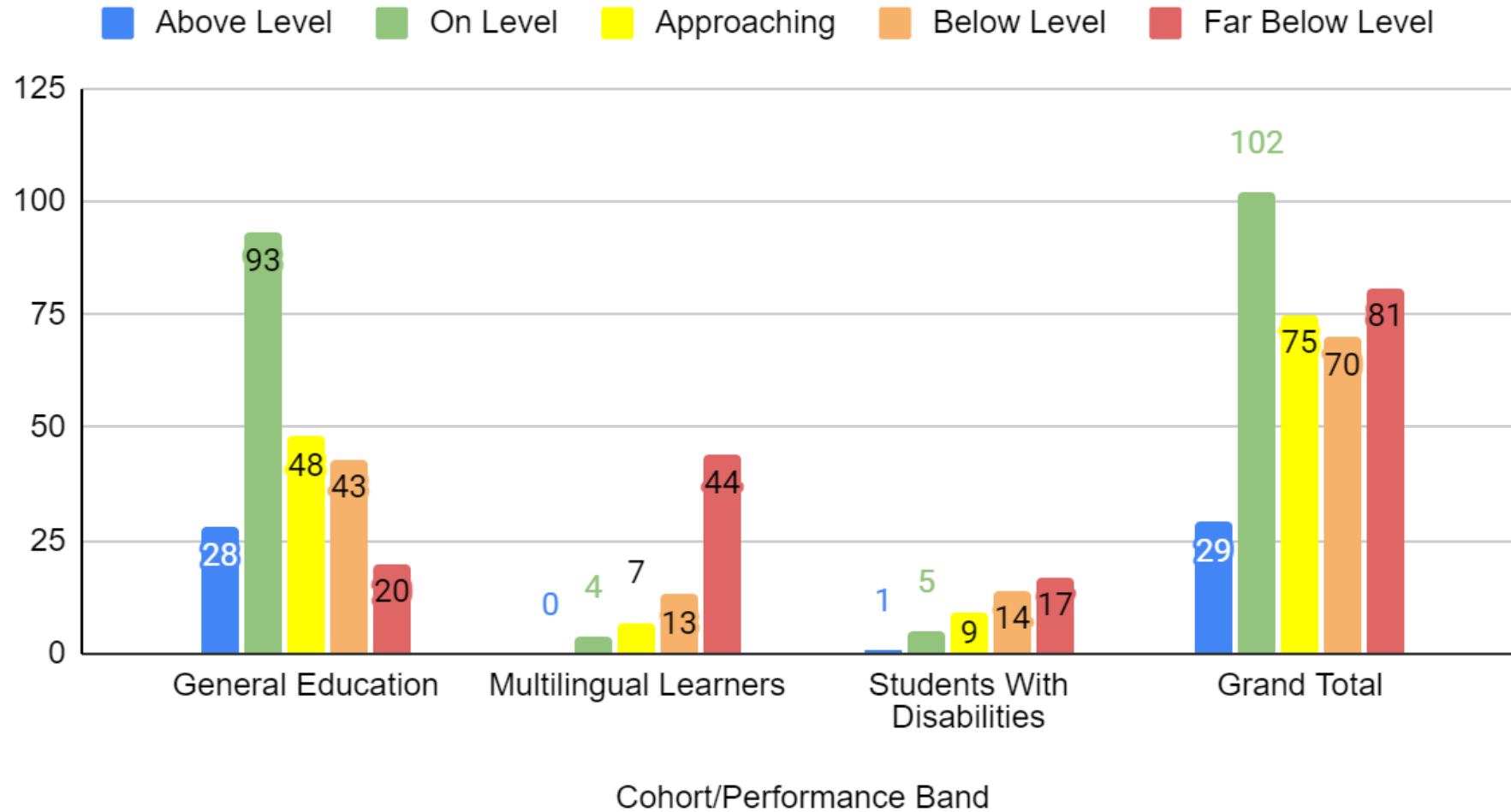


7th Grade

Growth Measure Fall of SY' 2023-2024 7th Grade						
Cohort/Performance Band	Above Level	On Level	Approaching	Below Level	Far Below Level	Grand Total
General Education	14	94	52	49	35	244
Multilingual Learners		1	4	12	41	58
Students With Disabilities		5	3	14	38	60
Grand Total	14	100	60	74	114	362

Growth Measure Midyear of SY' 2023-2024 7th Grade						
Cohort/Performance Band	Above Level	On Level	Approaching	Below Level	Far Below Level	Grand Total
General Education	20	84	73	46	36	259
Multilingual Learners	0	5	4	15	42	66
Students With Disabilities	1	9	10	15	28	63
Grand Total	21	98	87	76	106	388

Growth Measure Midyear data - 8th Grade



8th Grade

Growth Measure Fall of SY' 2023-2024

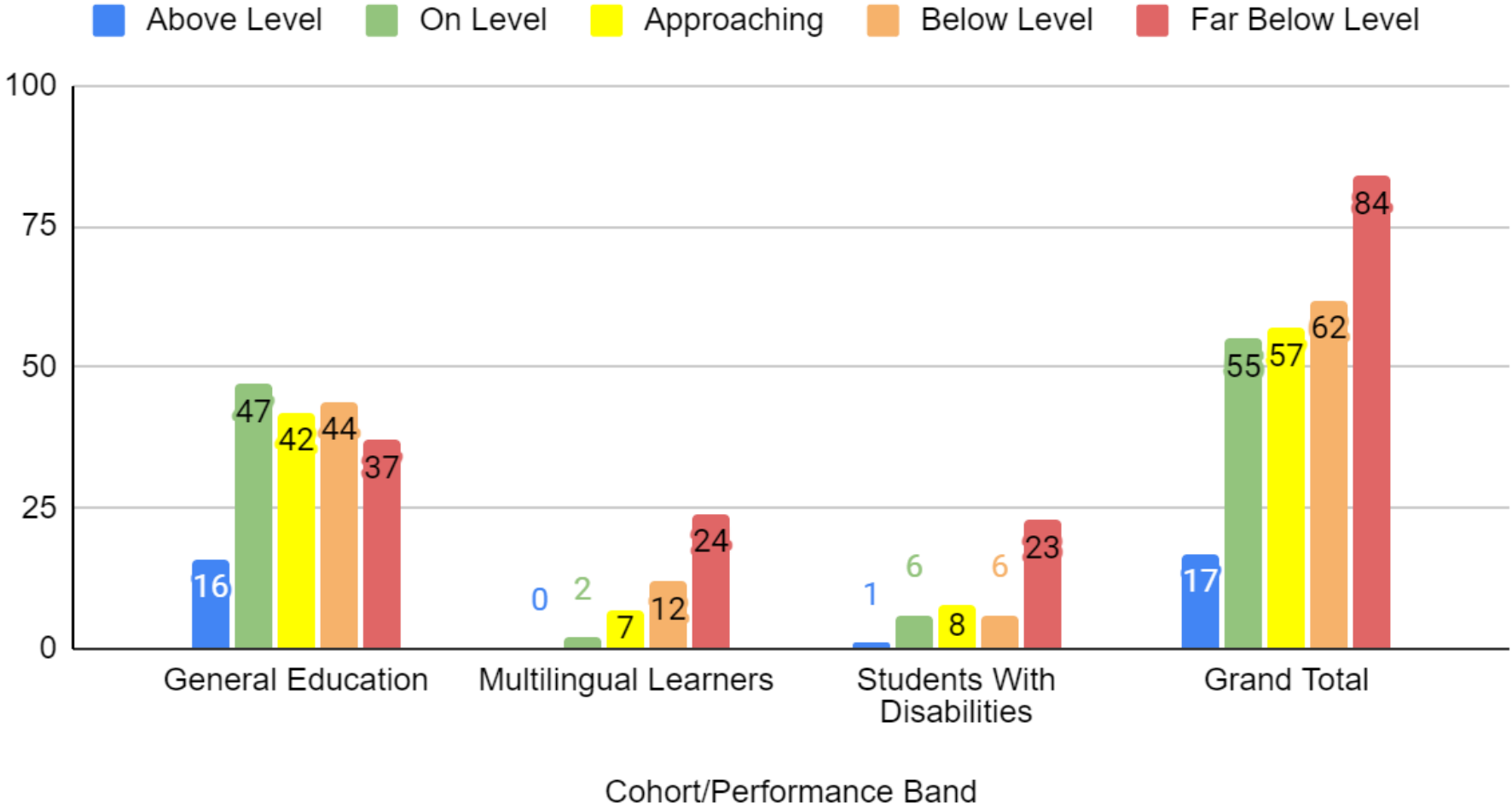
8th Grade

Cohort/Performance Band	Above Level	On Level	Approaching	Below Level	Far Below Level	Grand Total
General Education	14	84	62	53	25	238
Multilingual Learners		1	4	6	58	69
Students With Disabilities		1	9	14	22	46
Grand Total	14	86	77	74	104	355

Growth Measure Midyear of SY' 2023-2024 8th Grade

Cohort/Performance Band	Above Level	On Level	Approaching	Below Level	Far Below Level	Grand Total
General Education	28	93	48	43	20	232
Multilingual Learners	0	4	7	13	44	68
Students With Disabilities	1	5	9	14	17	46
Grand Total	29	102	64	70	81	346

Growth Measure Midyear data - 9th Grade



9th Grade

Growth Measure Fall of SY' 2023-2024

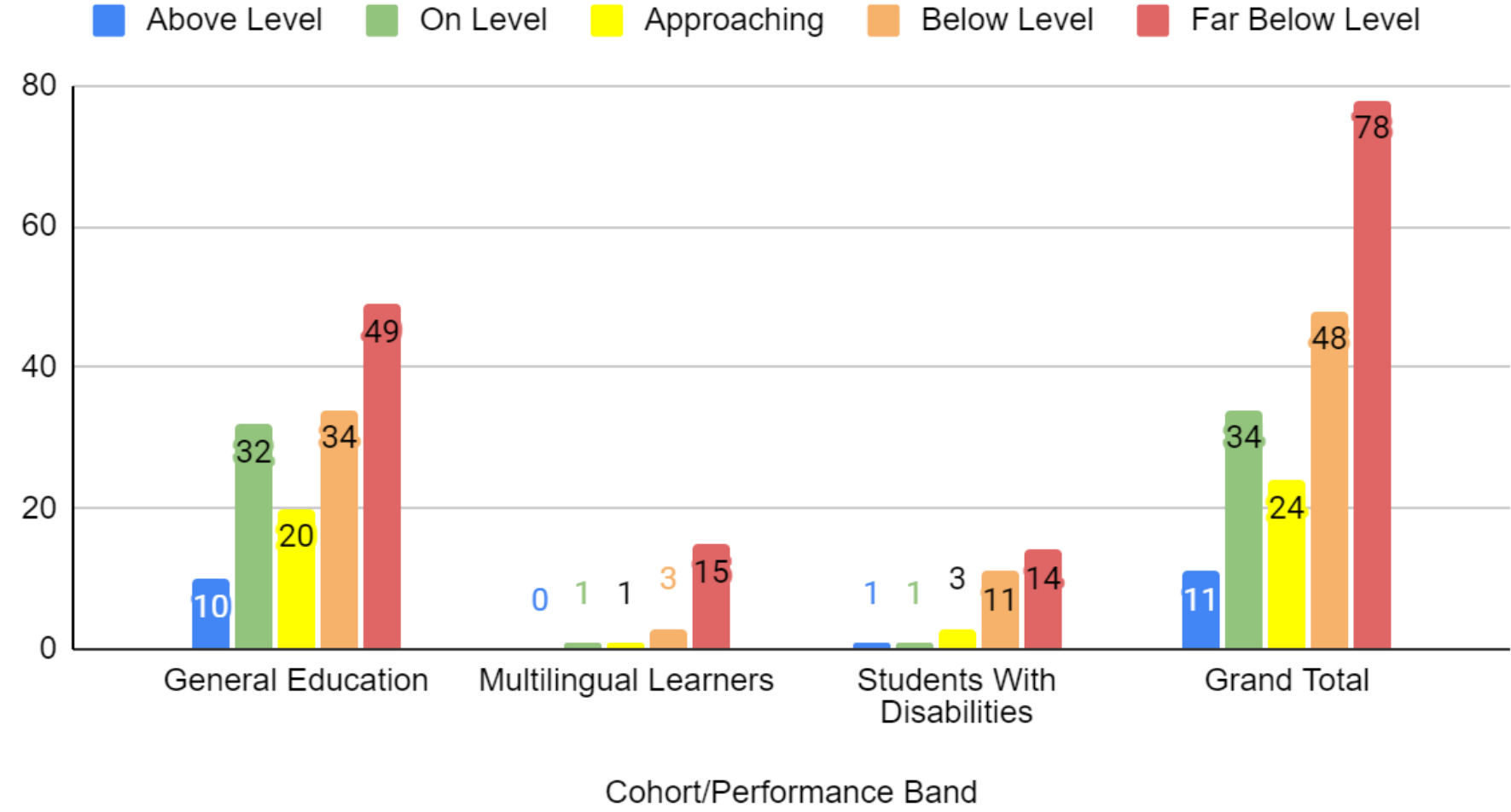
9th Grade

Cohort/Performance Band	Above Level	On Level	Approaching	Below Level	Far Below Level	Grand Total
General Education	15	38	52	49	31	185
Multilingual Learners			5	6	28	39
Students With Disabilities		3	5	9	25	42
Grand Total	15	41	63	64	84	267

Growth Measure Midyear of SY' 2023-2024 9th Grade

Cohort/Performance Band	Above Level	On Level	Approaching	Below Level	Far Below Level	Grand Total
General Education	16	47	42	44	37	186
Multilingual Learners	0	2	7	12	24	45
Students With Disabilities	1	6	8	6	23	44
Grand Total	17	55	57	62	84	275

Growth Measure Midyear data - 10th Grade

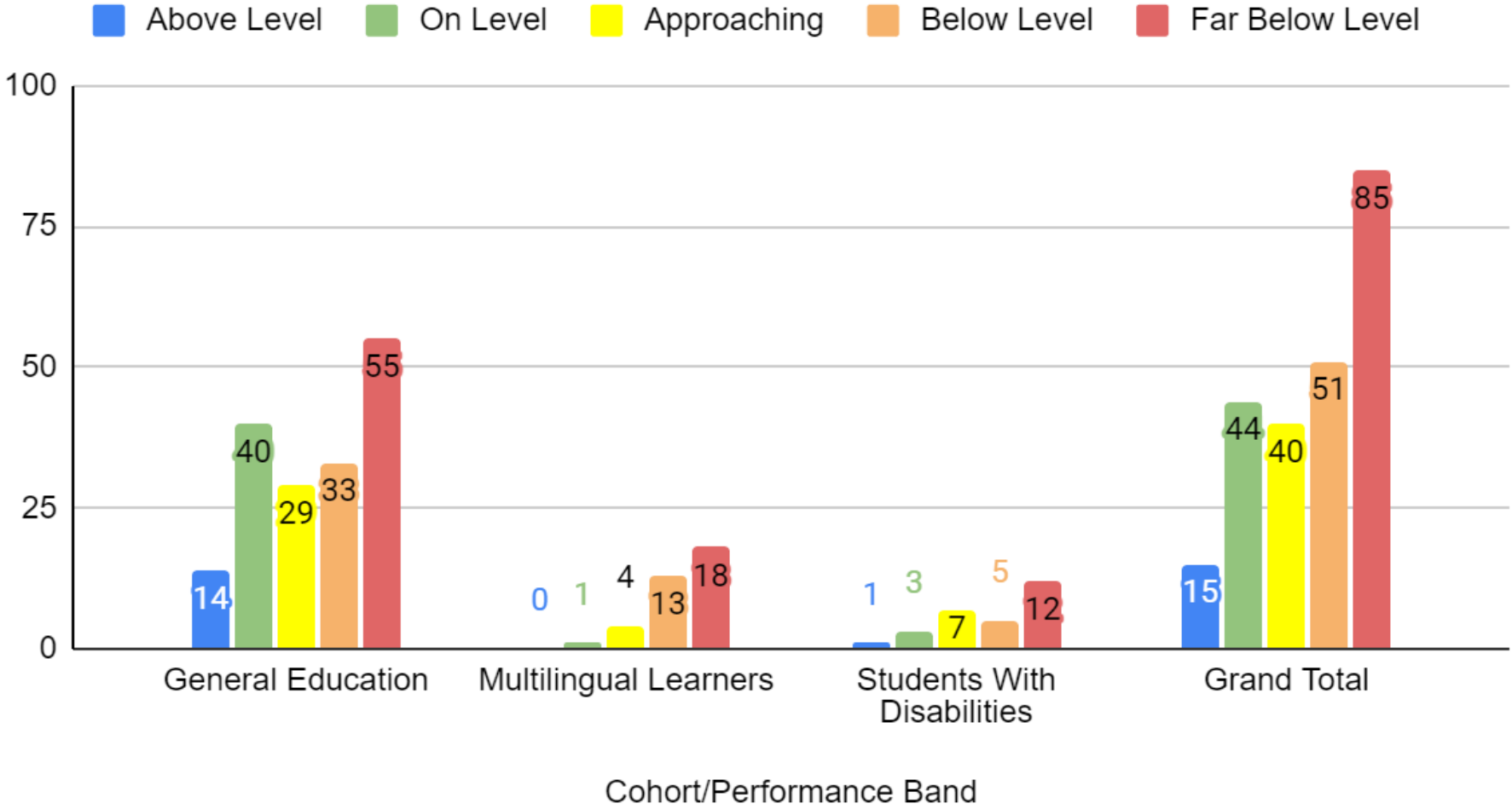


10th Grade

Growth Measure Fall of SY' 2023-2024							10th Grade	
Cohort/Performance Band	Above Level	On Level	Approaching	Below Level	Far Below Level	Grand Total		
General Education	11	26	39	53	61	190		
Multilingual Learners			2	2	19	23		
Students With Disabilities		3	2	7	23	35		
Grand Total	11	29	43	62	103	248		

Growth Measure Midyear of SY' 2023-2024 10th Grade								
Cohort/Performance Band	Above Level	On Level	Approaching	Below Level	Far Below Level	Grand Total		
General Education	10	32	20	34	49	145		
Multilingual Learners	0	1	1	3	15	20		
Students With Disabilities	1	1	3	11	14	30		
Grand Total	11	34	24	48	78	195		

Growth Measure Midyear data - 11th Grade



11th Grade

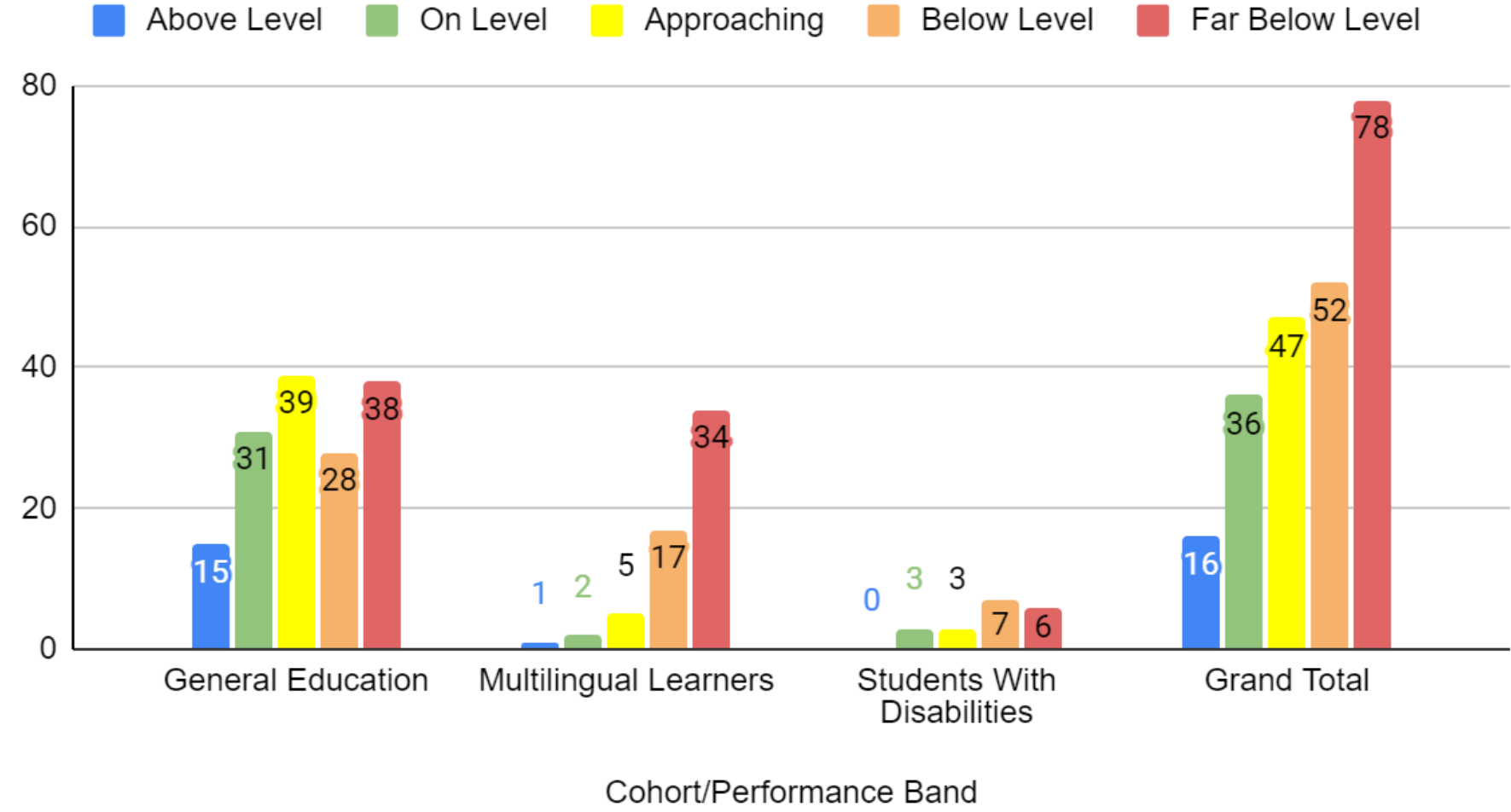
Growth Measure Fall of SY' 2023-2024 11th Grade

Cohort/Performance Band	Above Level	On Level	Approaching	Below Level	Far Below Level	Grand Total
General Education	10	33	42	49	55	189
Multilingual Learners					1	1
Students With Disabilities	1	5	4	7	15	32
Grand Total	11	38	46	56	71	222

Growth Measure Midyear of SY' 2023-2024 11th Grade

Cohort/Performance Band	Above Level	On Level	Approaching	Below Level	Far Below Level	Grand Total
General Education	14	40	29	33	55	171
Multilingual Learners	0	1	4	13	18	36
Students With Disabilities	1	3	7	5	12	28
Grand Total	15	44	40	51	85	235

Growth Measure Midyear data - 12th Grade



12th Grade

Growth Measure Fall of SY' 2023-2024

12th Grade

Cohort/Performance Band	Above Level	On Level	Approaching	Below Level	Far Below Level	Grand Total
General Education	15	37	46	44	66	208
Multilingual Learners					14	14
Students With Disabilities		3	2	8	10	23
Grand Total	15	40	48	52	90	245

Growth Measure Midyear of SY' 2023-2024 12th Grade

Cohort/Performance Band	Above Level	On Level	Approaching	Below Level	Far Below Level	Grand Total
General Education	15	31	39	28	38	151
Multilingual Learners	1	2	5	17	34	59
Students With Disabilities	0	3	3	7	6	19
Grand Total	16	36	47	52	78	229

Highlights

- The distribution of general education students across all grade levels follows a bell curve with the majority of students falling in the On Level and Approaching performance bands
 - particularly in 8th grades where the majority fall in the On level band
- The majority of students in the Far Below level are students are multilingual learners and/or students with IEPs. After reviewing this data:
 - the Special Services and Humanities departments team up to provide targeted professional development to the Special Education self-contained teachers in ELA
 - ELA supervisors and coaches work with Bilingual and ESL teachers on the implementation of the adaptations of the curricula to support language development of multilingual learners

Highlights

- 2nd year utilizing the Acadience assessments to assess reading readiness and there is a slight improvement from previous year's data.
- This is the first year the district will utilize Acadience to monitor the progress of at-risk 3rd grade readers.
- Teachers have received and are implementing the guidance from the reading readiness road map to plan small group instruction.
- Early literacy intervention teams have been formed at schools to identify, support, and monitor the progress of the students performing below grade level in grades K-3.
- We are seeing strong positive progress from the students where we have initiated progress monitoring.
- New pilot for Just Right Readers - take home decodables for students in K-2

Highlights

- This is the first year we are testing reading comprehension in this manner in grades 9 - 12.
- There is a concerted effort to get students in grades 9-12 to take the assessment seriously by working with teachers to utilize the data with intentionality and purpose for whole group and small group instruction.
- More and more students are using the writing lab and pairing the feedback with writing tutorial sessions and guidance has been given on how to utilize the tutoring sessions to improve fluency. See the ELA web pages

Winter 2023-24 Diagnostic 2 Data

David Scutari

Executive Director, Office of STEM-Focused Learning

April 10, 2024



Mathematics

i-Ready Data by Grade Fall 2023 (3,468 Students)

Grade	Students Tested	% Students Three or More Grade Levels Below	% Students Two Grade Levels Below	% Students One Grade Level Below	% Students Early On Grade Level	% Students Mid or Above Grade Level
K	383	0%	1%*	95%*	2%	2%
1	418	0%	35%*	63%	1%	1%
2	390	0%	59%	39%	2%	1%
3	417	32%	27%	36%	3%	1%
4	365	35%	24%	32%	6%	3%
5	412	38%	17%	34%	8%	3%
6	390	43%	17%	27%	11%	2%
7	406	44%	19%	25%	11%	1%
8	287	59%	18%	21%	2%	1%

i-Ready Data by Grade Winter 2023-24 (3,490 Students)

Grade	Students Tested	% Students Three or More Grade Levels Below	% Students Two Grade Levels Below	% Students One Grade Level Below	% Students Early On Grade Level	% Students Mid or Above Grade Level
K	386	0%	0%	80%*	9%	11%
1	426	0%	21%*	72%	3%	4%
2	391	0%	37%	54%	7%	2%
3	422	13%	26%	45%	11%	5%
4	370	21%	21%	34%	18%	7%
5	420	28%	18%	34%	11%	8%
6	388	29%	13%	32%	18%	7%
7	412	34%	16%	28%	14%	7%
8	275	49%	15%	25%	8%	2%

i-Ready Data Winter 2023-24 (386 Students)

Kindergarten

Student Group	Students Three or More Grade Levels Below	Students Two Grade Levels Below	Students One Grade Level Below	Students Early On Grade Level	Students Mid or Above Grade Level
General Education	0	0	169	24	37
Multilingual Learners	0	0	116	9	5
Special Education	0	0	32	2	0
Total	0	0	309	35	42

i-Ready Data Winter 2023-24 (426 Students)

Grade 1

Student Group	Students Three or More Grade Levels Below	Students Two Grade Levels Below	Students One Grade Level Below	Students Early On Grade Level	Students Mid or Above Grade Level
General Education	0	38*	173	12	13
Multilingual Learners	0	40*	123	0	3
Special Education	0	17*	20	1	1
Total	0	89*	307	13	17

i-Ready Data Winter 2023-24 (391 Students)

Grade 2

Student Group	Students Three or More Grade Levels Below	Students Two Grade Levels Below	Students One Grade Level Below	Students Early On Grade Level	Students Mid or Above Grade Level
General Education	0	58	136	23	5
Multilingual Learners	1*	65	66	4	1
Special Education	0	26	14	3	1
Total	1*	143	211	29	7

i-Ready Data Winter 2023-24 (422 Students)

Grade 3

Student Group	Students Three or More Grade Levels Below	Students Two Grade Levels Below	Students One Grade Level Below	Students Early On Grade Level	Students Mid or Above Grade Level
General Education	19	40	131	44	20
Multilingual Learners	24	57	54	2	0
Special Education	19	18	10	0	0
Total	54	111	191	46	20

i-Ready Data Winter 2023-24 (370 Students)

Grade 4

Student Group	Students Three or More Grade Levels Below	Students Two Grade Levels Below	Students One Grade Level Below	Students Early On Grade Level	Students Mid or Above Grade Level
General Education	26	39	87	51	21
Multilingual Learners	32	30	36	13	4
Special Education	27	10	7	3	0
Total	77	76	127	65	25

i-Ready Data Winter 2023-24 (420 Students)

Grade 5

Student Group	Students Three or More Grade Levels Below	Students Two Grade Levels Below	Students One Grade Level Below	Students Early On Grade Level	Students Mid or Above Grade Level
General Education	39	26	104	38	33
Multilingual Learners	54	38	33	9	1
Special Education	33	11	8	1	0
Total	119	75	144	48	34

i-Ready Data Winter 2023-24 (388 Students)

Grade 6

Student Group	Students Three or More Grade Levels Below	Students Two Grade Levels Below	Students One Grade Level Below	Students Early On Grade Level	Students Mid or Above Grade Level
General Education	37	35	98	62	27
Multilingual Learners	43	11	19	6	0
Special Education	36	7	9	4	1
Total	111	52	126	71	28

i-Ready Data Winter 2023-24 (412 Students)

Grade 7

Student Group	Students Three or More Grade Levels Below	Students Two Grade Levels Below	Students One Grade Level Below	Students Early On Grade Level	Students Mid or Above Grade Level
General Education	61	38	98	49	28
Multilingual Learners	44	17	11	3	1
Special Education	39	10	9	6	1
Total	142	65	117	58	30

i-Ready Data Winter 2023-24 (275 Students)

Grade 8

Student Group	Students Three or More Grade Levels Below	Students Two Grade Levels Below	Students One Grade Level Below	Students Early On Grade Level	Students Mid or Above Grade Level
General Education	60	29	54	20	4
Multilingual Learners	53	8	8	3	1
Special Education	24	4	8	0	0
Total	136	41	70	23	5

NWEA Mathematics Data by Grade Fall 2023 (1,357 Students)

Grade	Students Tested	Lo %tile ≤20%	LoAvg %tile 21-40%	Avg %tile 41-60%	HiAvg %tile 61-80%	Hi %tile >80%
K	5	100%	0%	0%	0%	0%
1	15	93%	7%	0%	0%	0%
2	14	79%	7%	7%	0%	7%
3	21	90%	10%	0%	0%	0%
4	20	95%	5%	0%	0%	0%
5	38	95%	3%	3%	0%	0%
6	28	100%	0%	0%	0%	0%
7	28	93%	7%	0%	0%	0%
8	83	17%	4%	13%	36%	30%
9	379	36%	22%	17%	11%	14%
10	290	41%	21%	16%	14%	8%
11	321	52%	17%	15%	12%	5%
12	115	73%	17%	5%	1%	4%

NWEA
Mathematics
Data by
Grade
Winter
2023-24
(1,297
Students)

Grade	Students Tested	Lo %tile ≤20%	LoAvg %tile 21-40%	Avg %tile 41-60%	HiAvg %tile 61-80%	Hi %tile >80%
K	5	40%	0%	40%	20%	0%
1	5	80%	20%	0%	0%	0%
2	11	82%	0%	0%	18%	0%
3	21	100%	0%	0%	0%	0%
4	25	96%	4%	0%	0%	0%
5	38	92%	8%	0%	0%	0%
6	23	91%	9%	0%	0%	0%
7	26	96%	4%	0%	0%	0%
8	80	15%	1%	13%	41%	30%
9	388	37%	21%	15%	13%	11%
10	301	45%	15%	13%	12%	15%
11	292	48%	18%	15%	11%	8%
12	82	66%	17%	9%	4%	5%

NWEA
Mathematics Data
Winter 2023-24
(80 Students)

Grade 8

Student Group	Lo %tile ≤20%	LoAvg %tile 21-40%	Avg %tile 41-60%	HiAvg %tile 61-80%	Hi %tile >80%
General Education	0	1	10	31	24
Multilingual Learners	0	0	0	0	0
Special Education	12	0	0	2	0
Total	12	1	10	33	24

NWEA Mathematics Data Winter 2023-24 (388 Students)

Grade 9

Student Group	Lo %tile ≤20%	LoAvg %tile 21-40%	Avg %tile 41-60%	HiAvg %tile 61-80%	Hi %tile >80%
General Education	51	62	44	44	54
Multilingual Learners	62	12	10	3	0
Special Education	30	8	4	2	2
Total	143	82	58	49	56

NWEA Mathematics Data Winter 2023-24 (301 Students)

Grade 10

Student Group	Lo %tile ≤20%	LoAvg %tile 21-40%	Avg %tile 41-60%	HiAvg %tile 61-80%	Hi %tile >80%
General Education	68	36	34	33	42
Multilingual Learners	46	8	3	0	0
Special Education	24	2	3	2	2
Total	136	46	40	35	44

NWEA Mathematics Data Winter 2023-24 (292 Students)

Grade 11

Student Group	Lo %tile ≤20%	LoAvg %tile 21-40%	Avg %tile 41-60%	HiAvg %tile 61-80%	Hi %tile >80%
General Education	66	45	39	26	18
Multilingual Learners	58	7	3	2	4
Special Education	17	2	2	3	1
Total	140	54	44	31	23

NWEA Mathematics Data Winter 2023-24 (82 Students)

Grade 12

Student Group	Lo %tile ≤20%	LoAvg %tile 21-40%	Avg %tile 41-60%	HiAvg %tile 61-80%	Hi %tile >80%
General Education	14	7	4	1	3
Multilingual Learners	33	7	3	1	1
Special Education	7	0	0	1	0
Total	54	14	7	3	4



Science

NWEA Science Data by Grade Fall 2023 (3,057 Students)

- *Percentiles and groupings are estimated as NWEA does not issue percentiles for grades 11 or 12 in Science.

GRADE	STUDENTS TESTED	LO %TILE <=20%	LOAVG %TILE 21-40%	AVG %TILE 41-60%	HIAVG %TILE 61-80%	HI %TILE >80%
3	357	43%	13%	18%	17%	9%
4	299	42%	18%	18%	12%	9%
5	370	39%	19%	16%	16%	11%
6	308	41%	20%	16%	13%	10%
7	332	36%	20%	21%	15%	8%
8	338	39%	21%	18%	13%	9%
9	307	35%	17%	17%	16%	15%
10	292	47%	17%	18%	10%	8%
11	339	51%*	16%*	13%*	13%*	6%*
12	115	60%*	14%*	15%*	6%*	5%*

NWEA Science Data by Grade
Winter
2023-24
(3,143 Students)

-
- *Percentiles and groupings are estimated as NWEA does not issue percentiles for grades 11 or 12 in Science.

Grade	Students Tested	Lo %tile <=20%	LoAvg %tile 21-40%	Avg %tile 41-60%	HiAvg %tile 61-80%	Hi %tile >80%
3	379	49%	14%	16%	14%	7%
4	319	46%	22%	14%	10%	8%
5	370	49%	21%	13%	8%	10%
6	321	47%	22%	12%	12%	8%
7	335	41%	21%	15%	14%	8%
8	331	46%	18%	13%	16%	7%
9	361	45%	16%	17%	13%	9%
10	292	50%	18%	13%	13%	6%
11	325	48%*	22%*	10%*	10%*	10%*
12	110	56%*	15%*	15%*	6%*	7%*

NWEA
Science Data
Winter 2023-24
(379 Students)

•Grade 3

Student Group	Lo %tile ≤20%	LoAvg %tile 21-40%	Avg %tile 41- 60%	HiAvg %tile 61-80%	Hi %tile >80%
General Education	73	40	51	49	27
Multilingual Learners	98	12	6	4	0
Special Education	25	3	3	0	0
Total	185	54	60	53	27

NWEA
Science Data
Winter 2023-24
(319 Students)

•Grade 4

Student Group	Lo %tile ≤20%	LoAvg %tile 21-40%	Avg %tile 41- 60%	HiAvg %tile 61-80%	Hi %tile >80%
General Education	63	55	37	25	24
Multilingual Learners	70	13	7	6	2
Special Education	18	4	0	2	0
Total	146	71	44	32	26

NWEA
Science Data
Winter 2023-24
(370 Students)

•Grade 5

Student Group	Lo %tile ≤20%	LoAvg %tile 21-40%	Avg %tile 41- 60%	HiAvg %tile 61-80%	Hi %tile >80%
General Education	60	56	40	23	38
Multilingual Learners	96	18	4	5	0
Special Education	29	3	3	1	0
Total	180	76	47	29	38

NWEA
Science Data
Winter 2023-24
(321 Students)

•Grade 6

Student Group	Lo %tile ≤20%	LoAvg %tile 21-40%	Avg %tile 41- 60%	HiAvg %tile 61-80%	Hi %tile >80%
General Education	79	53	38	37	26
Multilingual Learners	54	7	0	0	0
Special Education	25	4	1	3	0
Total	152	64	39	40	26

NWEA
Science Data
Winter 2023-24
(335 Students)

•Grade 7

Student Group	Lo %tile ≤20%	LoAvg %tile 21-40%	Avg %tile 41- 60%	HiAvg %tile 61-80%	Hi %tile >80%
General Education	70	57	43	47	22
Multilingual Learners	45	9	6	0	0
Special Education	26	6	2	0	4
Total	139	72	51	47	26

NWEA
Science Data
Winter 2023-24
(331 Students)

•Grade 8

Student Group	Lo %tile ≤20%	LoAvg %tile 21-40%	Avg %tile 41- 60%	HiAvg %tile 61-80%	Hi %tile >80%
General Education	71	49	37	50	23
Multilingual Learners	56	5	3	0	1
Special Education	26	7	2	2	0
Total	152	61	42	52	24

NWEA
Science Data
Winter 2023-24
(361 Students)

•Grade 9

Student Group	Lo %tile ≤20%	LoAvg %tile 21-40%	Avg %tile 41- 60%	HiAvg %tile 61-80%	Hi %tile >80%
General Education	65	38	53	41	34
Multilingual Learners	65	15	3	2	0
Special Education	31	6	4	4	0
Total	161	59	60	47	34

NWEA
Science Data
Winter 2023-24
(292 Students)

•Grade 10

Student Group	Lo %tile ≤20%	LoAvg %tile 21-40%	Avg %tile 41-60%	HiAvg %tile 61-80%	Hi %tile >80%
General Education	89	41	35	33	16
Multilingual Learners	37	7	1	4	1
Special Education	19	5	3	0	1
Total	145	53	39	37	18

NWEA
Science Data
Winter 2023-24
(325 Students)

•Grade 11

Student Group	Lo %tile ≤20%*	LoAvg %tile 21- 40%*	Avg %tile 41- 60%*	HiAvg %tile 61- 80%*	Hi %tile >80%*
General Education	81	57	25	33	28
Multilingual Learners	56	7	3	1	1
Special Education	20	6	6	0	2
Total	156	70	34	34	31

*Percentiles and groupings are estimated as NWEA does not issue percentiles for grades 11 or 12 in Science.

NWEA
Science Data
Winter 2023-24
(110 Students)

•Grade 12

Student Group	Lo %tile ≤20%*	LoAvg %tile 21- 40%*	Avg %tile 41- 60%*	HiAvg %tile 61- 80%*	Hi %tile >80%*
General Education	31	13	15	4	8
Multilingual Learners	29	4	1	2	0
Special Education	2	0	0	1	0
Total	62	17	16	7	8

*Percentiles and groupings are estimated as NWEA does not issue percentiles for grades 11 or 12 in Science.

Highlights



Increase in students either Early On Grade Level or Mid or Above Grade Level – All grades K-8 Mathematics

Average of 9 percentage points (over 300 students)



Decrease in students either Two Grade Levels Below or Three or More Grade Levels Below – All grades K-8 Mathematics

Average of 14 percentage points (almost 500 students)



60% Median Progress Toward Annual Typical Growth – Grades K-8 Mathematics



43% of Students with Improved Placement (over 1,400 students) – Grades K-8 Mathematics

Highlights (continued)



Increase in students in High Average or High Percentile Ranges – Grades 8, 9, 10, 11, and 12 Mathematics



Decrease in students in Low or Low Average Percentile Ranges – Grades 8, 11, and 12 Mathematics



54% of NWEA Mathematics students met their growth goal from Fall to Winter



63% of NWEA Mathematics students increased their scale score from Fall to Winter

Highlights (continued)



Increase in percentage of multilingual students in High Average or High Percentile Ranges – Grades 10, 11, and 12 Science



Decrease in percentage of multilingual students in Low or Low Average Percentile Ranges – Grades 10, 11, and 12 Science



61% of Science students increased their scale score from Fall to Winter

The Orange Public Schools Facilities Update



Mr. Jason Ballard
School Business Administrator
April 10, 2024
Focus Core Area Number 1-4
District Goal Number 3



District Facility Maintenance & Custodial Services Updates

- **Thorough cleaning and disinfecting occurs daily for all of our touch points in the building (examples include but are not limited to door handles, bathrooms, entrances, exits, and handrails)**
- **Walk-throughs of all district school facilities**
- **Meetings between the District and PCI are held regularly based on updates related to COVID-19 mandates and expectations**
- **Facility projects continue so we can ensure a safe and clean learning environment for our children and staff.**

Orange Board of Education Facilities Updates

- Installation of the new boiler at Rosa Parks Community School was completed in February.
- The renovation of the gymnasium at Orange Preparatory Academy of Inquiry and Innovation has commenced.
- The sewage issues at Orange High School have been resolved.



Orange Preparatory Academy of Inquiry and Innovation

- By removing the damaged wood flooring, we are taking proactive measures to prevent any additional water damage. It's crucial that we take action now to address the issue and avoid any potential future problems.



Orange Preparatory Academy of Inquiry and Innovation

The facilities department ensured that all downspouts, gutters, and leaders were clear to prevent any water from entering the building, which could potentially halt the renovation of the gym floor.





Rosa Parks Community School

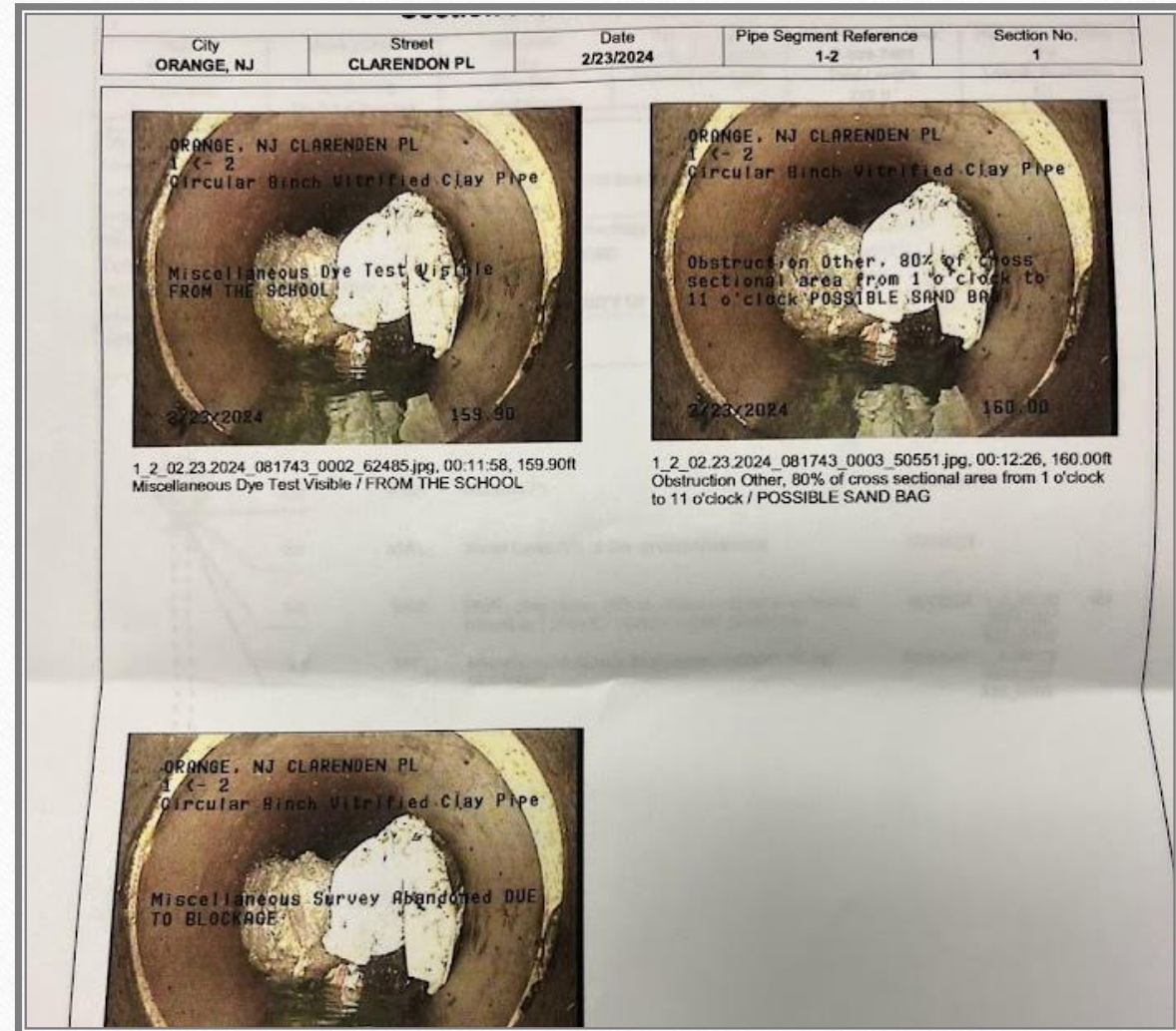
Boiler Installation is complete



Rosa Parks Community School

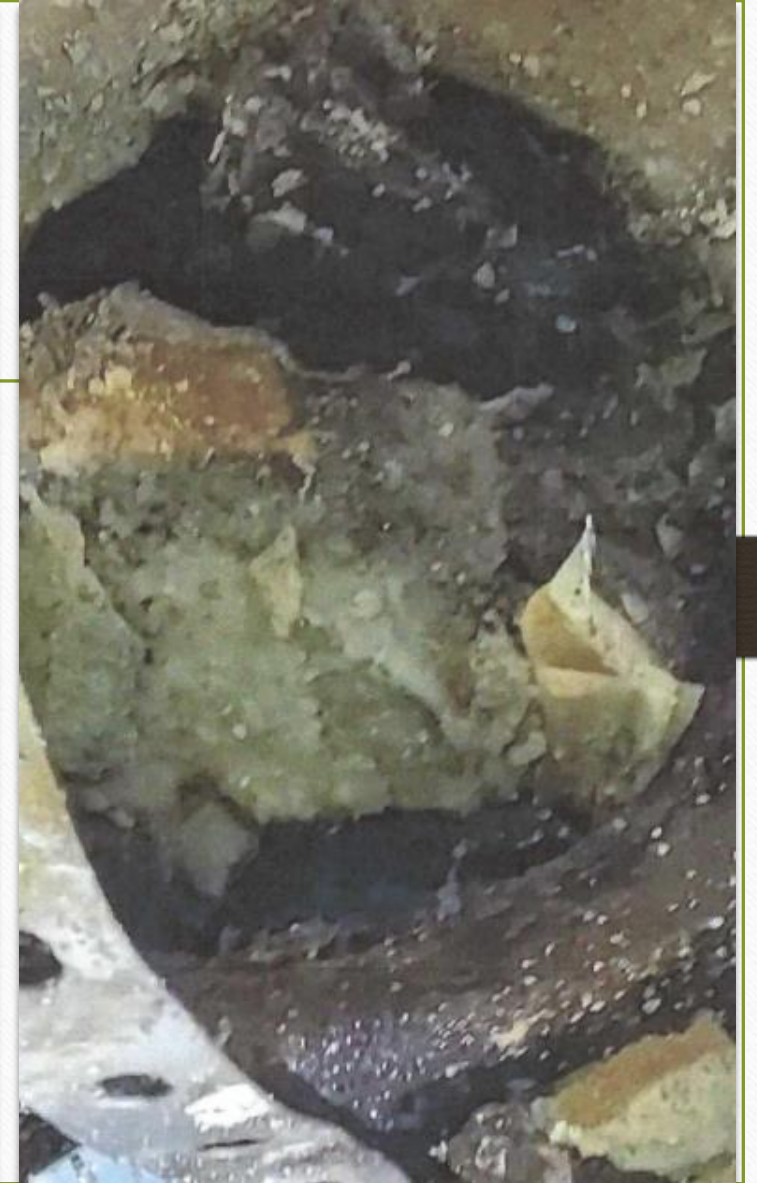
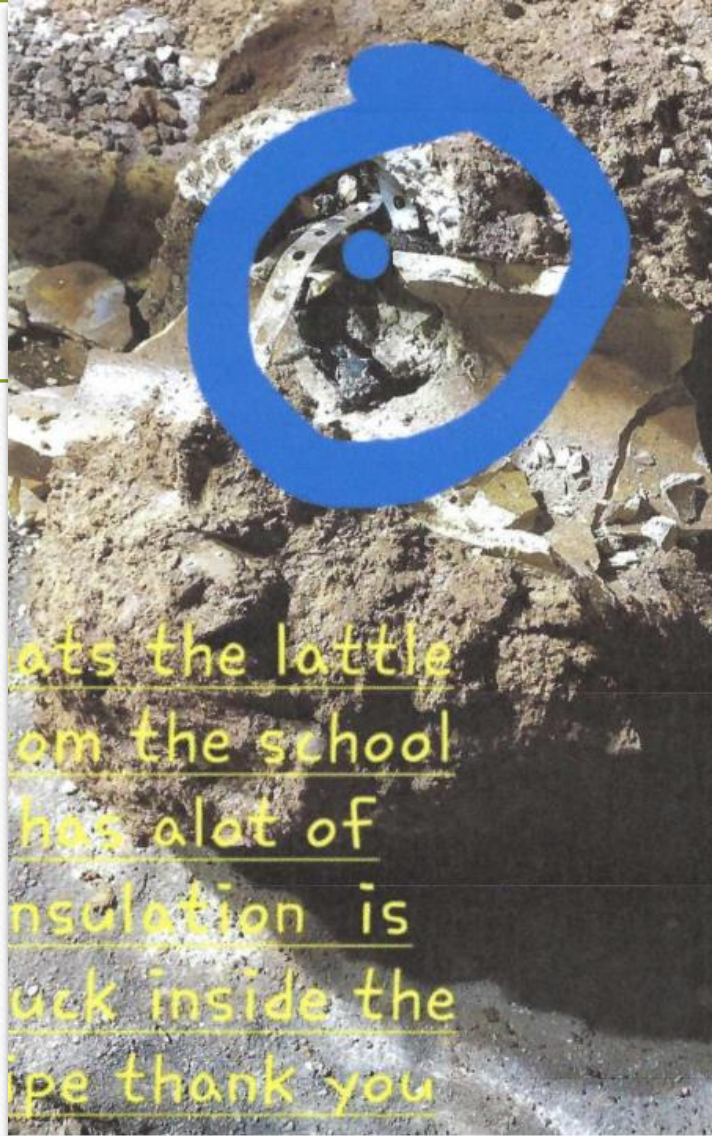
Orange High School

This picture shows what was causing sewage backup in the new addition of Orange High School.



Orange High School

- Photos of what was found stuck inside the Pipe.



Orange High School

- The debris and the old pipe were removed, and new sewage pipes were installed.



Orange Board of Education

- Work orders are being entered into Brightly (work order reporting system), from classroom lights being out to steam pipes breaking. The team and I, under the guidance of Mr. Ballard, will continue to address all issues as they are entered into the system. In doing so, we can ensure that we have a safe and clean learning environment for our children and staff.

In the Month of April 2024

- The team and I, under the direction of Mr. Ballard, will continue to meet with the Schools Development Authority and Terminal Construction to make sure that there is progress related to the Construction at the Orange High School Punch-list items and the Cleveland Street School Project.

Reminder from the Office of Facilities



We will continue to update the community, staff, and Board of Education members of all progress.



The health and safety of staff and students are at the apex of all facilities undertakings.

Social Media

Hashtags:

#GoodtoGreat

#MovingintoGreatness

#OrangeStrong

Follow us:

- Orange Public School District



- @ops_district



- opsdistrict



- Orange Public School District



Orange Public Schools Social Media

Reminder: The
Orange App
Have you signed up?
You know I am
sending blasts out
for folks to sign
up...Stay Tuned



Announcing the NEW Orange Public Schools Mobile App!

Designed specifically to keep you better informed, in REAL time!

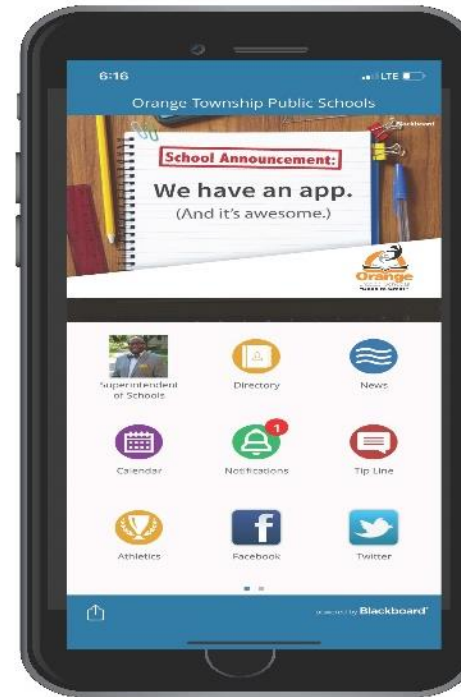
Available for Apple and Android devices.

The app is **FREE** and available for **download today**. You are **encouraged to sign up**.

Download the new app in 3 easy steps:

1. On your smartphone, go to the iTunes App Store® or Google Play®
2. Search **Orange Public Schools**
3. Then select our **Orange Public Schools** app for free download

School news in the palm of your hand, your new Orange Public Schools mobile app is just a few taps away.



Download it today!